



# ŌTAKI MAIL



PO Box 109 Otaki

otakimail@xtra.co.nz

06 364 5500

www.otakimail.co.nz

September 2016

## Whiti! Grand final champions



The Vibes at Bandquest P4



Alex Pledger at Waitohu P7



Glenn Colquhoun Poetry P10



It was all about whānau with players lining up with their children at the beginning of the game. The players and club officials are lined up as follows: (from left) Manaia Osborne (captain/coach), Tanira Cooper, Jake Cribb, Rāhiri Connor, Tamati Davis, Aaron Whitikia, Kahura Cameron, Tipene Roa, Teariki Peneha, Tiwana Thompson Paringatai, Chevy Graham, Himiona Henare, Te Umu Miratana, Tainui Brown, Shanti Davis, Dane Cooper, Moko Cooper, Hayden Davis, Dylan Winata, Henare Manning

BY WHARE AKUHATA

History was in the making in the game between Whiti Te Ra and Te Aroha Eels. A closely-fought, torrid match with the lead changing several times and the game going right to the wire. But in the end Whiti Te Ra wouldn't be denied a historic win and the perfect end to a perfect season.

They narrowly beat Te Aroha Eels 26-24 to take out the Wellington Rugby League Grand Final played at the Hutt Rec on 20 August.

The crowd numbered about 3000 and it looked like most of Ōtaki were at the ground. Supporters who couldn't get to the game were listening to the Te Atiawa Toa FM live simulcast. This was the case for staunch supporters Tony Manning, Francis Nepia (in hospital) and John Barrett in Queensland.

Hotel owner and sponsor of Whiti Te Ra Duane Watt said the turnout was an inspiration for the team as was the special chant written especially for the match combining the tune from AC/DC's Thunderstruck and the team's name.

Duane was over the moon about the result and a special relationship has developed between him and the team. This is the fourth year he has sponsored Whiti - from the time he re-opened the Telegraph Hotel.

In those four years Whiti Te Ra took out the Manawatu competition three years in a row and this season, the first for Whiti Te Ra in the Wellington competition. They have gone through unbeaten and haven't conceded a draw. According to some, a first in the history of Wellington league and the only team to score over 500 points in a season.

Earlier on Saturday Duane hosted the traditional team breakfast and said this breakfast was a bit special. He got news that local woman and the team's fellow gym trainee Riria Ropata had broken the New Zealand women's deadlift record at the national powerlifting championships in Christchurch.

Duane said it was a real inspiration "for the boys".

As for the game Duane said it was an awesome day, the field was in good condition and it was

fast with the ref letting the game flow. Upfront it was a titanic battle with no quarter given.

He thought prop Rāhiri Connor made the difference when he came on, making some damaging runs and putting some big hits on his opposites - stopping the Eels gaining any momentum.

Player and assistant manager Shanti Davis was stoked and put the win down to a solid defense, a "never-say-die attitude" and "the guys just having each other's backs."

Hesitant to name names Mr Davis agreed Rāhiri Connor's damaging runs and fellow forward Hayden Davis were instrumental in Whiti Te Ra's forwards gaining ascendancy over their opposites.

Te Aroha Eels tried hard and often threatened with their talented backs. They scored the try of the match, a length-of-the-pitch try from their own goal line. However costly penalties were part of their downfall.

.....continued Page 5

**The local café everyone's talking about!**

Open 7 days 6.30am till late afternoon, including public holidays  
• Fair trade organic coffee • NO SURCHARGE • 06 364-6742 • riverstonecafe.co.nz

**RiverStone Café**  
Otaki, NZ

**BREAKING NEWS**  
RiverStone Café **OPEN 6.30am every day**

Find us on STATE HIGHWAY 1, NEXT TO KATHMANDU

**EXCLUSIVE OFFER:**  
Use your Farmlands card & receive 10% off your purchase, 7 days a week

**Farmlands** co-operative  
CARD ACCEPTED HERE

**superGold** RiverStone Café offers Gold Card holders a 10% discount Monday to Friday.

COMMITTY PARTNER  
**CPNZ**  
NEW ZEALAND  
RiverStone Café proud sponsor of Otaki Community Patrol



## Elders cook with Mr Grumpy

Elders from Reevedon Home and Village in Levin turned to a Kiwi favourite when they put their cooking skills to the test recently.

The home's Men's Group got the chance to prepare their own lunch when they visited Mr Grumpy's Fish N' Chip shop in Foxton Beach.

Recreation officer Davina Rawiri says Men's Group embarks on a new adventure each week.

"The ideas for what we do come from the men, plus we get invitations from community organisations and event organisers."

Reevedon Home resident Robin Richardson says the infamous Mr Grumpy isn't so grumpy after all.

"He's a lovely guy - although they call him Mr Grumpy, you wouldn't get anybody with a better temper!"

Robin says the trip to Mr Grumpy's was a unique experience that brought back fond memories.

"I really enjoyed it. I owned a tea room in Masterton for 12 years and we made fish and chips there. Barbara, my wife, was the cook and my daughter and her friend worked alongside us."

Davina says the group is helping to foster friendships, spark reminiscing about life experiences, increase the men's confidence and give them opportunities to try new things.

"It has given the men more opportunities to get out and about in their local community. They interact

with people of all ages, from all walks of life, and take part in spontaneous activities. It's a lot of fun."



Foxton Beach Fish N' Chip shop owner Mr Grumpy cooks with Reevedon Home resident Robin Richardson

*Reevedon Home and neighbouring Reevedon Village are both operated by Enliven, part of the not-for-profit organisation Presbyterian Support Central.*

*For more information about Reevedon Home and Village in Salisbury Street in Levin, free phone 0508 36 54 83 (that's 0508 ENLIVEN) or visit [www.enlivencentral.org.nz](http://www.enlivencentral.org.nz).*

## Feel at home with Enliven

If you, or your loved one, needs extra support, then Enliven's Reevedon or Levin Homes may be the perfect option. You'll enjoy companionship, fun and vibrant surroundings, whilst we support your daily living through our rest home, hospital and dementia care services.

**Reevedon Home**  
37 Salisbury Street, Levin  
Bowls, bingo, baking...there is always something happening! At Reevedon Home residents get involved in the running of the home, making for a varied social calendar and homely home. And for couples who need different levels of support, Reevedon Home is right next door to Reevedon Village.

**Levin Home for War Veterans**  
Corner Prouse and Matai Streets, Levin  
Everyone is welcome at Levin Home. This unique home recognises the men and women who have fought for our freedom and cared for our country. Residents tell us they enjoy not only the large rooms and great social calendar, but also the companionship of fellow residents, friendly staff and a vibrant atmosphere.

Visit: [www.enlivencentral.org.nz](http://www.enlivencentral.org.nz) | Freephone: 0508 36 54 83

## OLDILOCKS AND THE THREE BINS

"Sizing Things Up"

BY HOWIE C. THINGS

Once upon a street in Ōtaki there were three bins - Little Green Bin, Middle-Sized Green Bin, and Big Green Bin.

They had each been assigned to the same address, but arrived at different times.

Little Green Bin came first. Though quite basic and squat it was very capable, being responsible for all recyclable items - plastic, tin, glass and paper.

It was shortly joined by Middle-Sized Bin, which looked down upon Little Green Bin and boasted of superior height, wheels for locomotion and a lid for protection from inclement weather. It considered itself to be "Upper Class", but its role was confined to only one responsibility - rubbish.

In time, these two bins began to relate, finding advantages in their different sizes and respecting their specific roles. Little Green Bin particularly appreciated the protection provided by the taller bin when cold sea breezes whipped down the street on collection days. Middle-Sized Green Bin, down-hearted to find it had been assigned to rubbish, felt uplifted when Little Green Bin pointed out that perishable material was in particular need of efficient containment and disposal. So everything was sweet.

Then Big Green Bin arrived.

It was super-superior in size and attitude

- taller, wider, with a bright yellow lid that it wore like a crown. It was almost as tall as Oldilocks, who just happened to remark to a neighbour that he considered the new addition to be superfluous.

Overhearing only the first part of the word, super, applied to its status, Big Green Bin's ego swelled even further. It rubbished the two smaller bins, referring to Little Green Bin as a "low-life". And it called Middle-Sized Green Bin "Stinky".

It also boasted that it was now responsible for all the recycling because Little Green Bin had been demoted to only one item - glass. But Little Green Bin was uplifted by a remark from Middle-Sized Green Bin that they both had specialist roles - one of them responsible solely for rubbish, the other solely for glass. Big Green Bin had been dumped with the motley remainder.

With the arrival of Big Green Bin, collection days also changed. Little Green Bin and Middle-Sized Green Bin were still placed out on street duty together, but now only fortnightly. Big Green Bin was deployed on alternate weeks, and boasted loudly of being super capable of handling any job solo.

But Big Green Bin's superior height made it a prime target for the chilling sea breezes that targeted bins on collection days. It returned from street duty one day bemoaning its plight.

"Oh, oh, I suffer so terribly from wind."

Little Green Bin and Middle-Sized Green

## Community Expo on again

The Ōtaki Promotions Group is holding its fifth annual Community Expo at the Memorial Hall from 10am-2pm on Saturday 17 September.

Community groups, sporting organisations and other not-for-profit groups will be showcasing their services.

"It's a great opportunity for people to find out about the various groups available in Ōtaki," says Expo co-ordinator Carol Ward. "You might like

to start a new hobby or sport, meet new people by joining a group, or just find a way of helping out in the community."

Stalls will have information available on group activities, and people who can advise on how to join, or just help out.

Any groups that have not yet booked a stall can contact Carol Ward on 06 364-7732 or email [otakicommunityexpo@gmail.com](mailto:otakicommunityexpo@gmail.com)



The 2015 Community Expo at the Memorial Hall. It will be bigger and better this year!



**SUSIE MILLS LAW**  
*Ask for Susie Mills by name!*

**Get the support of professional advice with easy access locations**  
*Susie Mills and Fleur Hobson*

Wills, estates, and powers of attorney  
Waikanae - 5 Apurita Place, Countdown carpark  
Ōtaki - 85 Main St, previously McLarens Law  
04 293 3736 | 06 364 7190  
[office@susiemills.com](mailto:office@susiemills.com) | [www.susiemills.com](http://www.susiemills.com)



Bin looked towards Oldilocks, who was gardening - Big Green Bin was not the only one...

"It's not easy being tall!" wailed Big Green Bin.

"It's not easy being small," sighed Little Green Bin.

"It's not easy being middling," moaned Middle-Sized Green Bin.

Then Little Green Bin who, though small

in size, was thoughtful and wise remarked, "Sure we are all different. Sure we have different roles. BUT WE ARE ALL BINS. Let's try and relate!"

So that is what they decided to do, that day, and for ever after...

The only problem remaining was Oldilocks, who occasionally forgot which bin held what.

# Editorial

Two months ago our editorial asked ‘was there a housing problem in Ōtaki?’ We noted a shortage of good rental property, and with house prices on the rise it was beginning to look like a difficult life if you were poor and homeless in Ōtaki.

This month we must consider the Government’s proposal to sell off 70 state houses in Ōtaki.

State houses are for the poorest of our community. They should be a way to make sure no-one goes without a home, or has to live in a garage, a bus, a caravan or on the streets.

As Michael Joseph Savage rightly said in 1934 when he first promoted the concept of state houses, ‘I think that we can have smiling homes in New Zealand; that we can use public credit for the purposes of building homes worth living in.’

Although you could argue that state houses these days, after years of neglected maintenance, are hardly worth living in, they are a failsafe for many people unable to afford to buy their own little piece of paradise. These houses were plain, compact, utilitarian but good quality, using good New Zealand timber. They have lasted the distance since those heady days of 1936 when the first of 375 houses were built and over the next four years a further 6,459 were built.

That the current government is attempting to sell off these homes built by the state for our most needy in the midst of a housing boom when

people can no longer afford to buy a home is as close to cynical dereliction of duty to support our most vulnerable as you could get.

The poor will not be able to buy these homes and do them up as a home for their family.

There are no community trusts in Ōtaki capable of funding the purchase of these homes to enable our most needy to survive in warm safe homes.

In the 1970s, Norman Kirk said “People don’t want much: Someone to love, somewhere to live, somewhere to work and something to hope for.”

Those sentiments are as valid today as they were in Kirk’s day or in Savage’s day when state houses were first built.

State housing is social good. It is good for the family, the community, the health and education, and social welfare budgets. It makes a community strong as those most vulnerable are looked after.

So far 298 houses have been sold in the last ten months, averaging 32% below official valuation. This is asset stripping – our assets - and will do nothing for social cohesion of our community or help the homeless. Neither is it good business sense to sell off assets below their value.

We should be doing good for our community and not sitting idly by while the government sells off our own assets for ideological reasons.

**The Ōtaki Mail is online  
You can read us on your phone  
your tablet  
or your computer  
at [www.otakimail.co.nz](http://www.otakimail.co.nz)**

## What’s ON

### Ōtaki Market

SHI, opposite New World  
Sunday August 7 and 21 August

### Kapiti Heritage Month

**Steam Incorporated Paekakariki Open day** - Saturday 24 September  
**Paekakariki History Afternoon** - St Peters Hall Saturday 17 September  
**Kapiti’s Marines** - Talk by Anthony Dreaver, Paraparaumu Library  
Wednesday 7 September at 10.30am

**Ōtaki Dance Group** meets each Tuesday at 7.30 pm at the Memorial Hall. Newcomers are most welcome.

### Ōtaki Community Expo

17th September 10am-2pm at the Memorial Hall.

### Waitohu School Olympic Games Fancy Dress Dance

21 September Nga Purapura Parents, kids and toddlers

### Mahara Gallery

Waikanae  
27 Aug – 9 Oct Frances Hodgkins and Girolamo P. Nerli Early Works  
Te Whenua, The Land  
10 September 2pm Janet Bayly on Hodgkins and Nerli

### Spring Sing -Festival of Adult Singing groups

Ōtaki Memorial Hall  
25 September 2-4

### Ōtaki Community Choir

Pop Up Choir Seven weeks rehearsals from Sunday 16 October  
2-3pm Anam Cara 50 Rangiuuru Road

### Plunket

Anchor Bolt Day in Ōtaki for kid’s car seats  
Thursday 15th September between 9am-1pm  
Spannerworks, Riverbank Road, Ōtaki  
Free installation of anchor bolts  
Supported by KCDC and Spannerworks in Ōtaki.

### Transition Town Ōtaki

Annual General Meeting  
Sunday 11 September 12 noon - 2pm  
At the staffroom, Ōtaki College.  
Guest speaker, KCDC’s Green Gardener Hannah Schwartz

### Te Horo School

Annual Fair Saturday 10 September 11am

### Prostate Cancer Fundraising Dinner

Friday 16 September 6pm (see P5)

### TPPA - Action Day meeting

Newhanga Kapiti Community Centre, 15 Ngahina St, Paraparaumu.  
Tuesday 6 Sept 6.30 – 8.30pm

## Letter to the Editor

Dear Sir

I refer to your piece in the August Mail offering a reward for anyone shooting down a Drone. You should be aware that “drones” are regarded as aircraft by the Government and endangering an aircraft is an offence under Section 44 of the Civil Aviation Act. Whilst it may be regarded as amusing, the offence is the same as trying to blind a pilot with a laser or trying to carry explosives onto a civil aircraft.

The Police have prosecuted people for shooting at drones.

Regards,

Jonathan Shorer  
New Zealand Aviation Federation

*It would appear that the NZ Aviation Federation is suffering serious humour deprivation....Ed*

**The Ōtaki Mail is your free community newspaper  
paid for by its advertisers.  
Without their support, there would be no Ōtaki Mail  
Please support our advertisers, our local businesses  
so that the Ōtaki Mail can continue**

## Thumbs Up



- Renée and the cast of ‘A House to Let’
- 400 of the Ōtaki Community who rocked up
- Duane at the Tele for sponsoring Whiti Te Ra
- Elections – your chance to participate in democracy
- Daffodils
- Sue McIntosh for weeding and planting the berm in Moana Street
- The Districtwide candidates who bothered to turn up to the Ōtaki Meeting –Boonen, Ellis, Howson, Ruthe (also mayoral/DW – Scott and Elliot- non speaking)

## Thumbs Down



- The young boys who tagged the Ōtaki College on the evening of 4 August. Shame on you.
- Selling Ōtaki’s state houses
- Pine pollen & Hay fever
- The ratbags who stole Sue’s newly planted Hebes in Moana Street. – Shame on you
- The Districtwide candidates who didn’t bother with the Ōtaki Meeting – Austin, Bell, Cardiff, Ellison, Gregory.

## ŌTAKI MAIL MADNESS

Maybe one day I could play for the Hurricanes - Super Rugby champions....

...or maybe the All Blacks - winning the World Cup...

...or even an Olympic sailing team - winning gold medals!

No I know.....play for Whiti Te Ra!  
Wellington Rugby League  
Premiership Winners!



BY VIVIENNE BAILEY

**Te Horo School band rocks at Bandquest**

The Te Horo School senior (year seven and eight) band, 'The Vibes' scored silver at the recent annual Rockshop Band Quest as well as winning a \$200 credit with music retailer, The Rockshop.

Now in its sixth year, the Rockshop Bandquest is open to bands of two or more members, from intermediate or primary schools, playing a short set of covers or original songs. It's an ideal opportunity for children to network with others of their own age, and a real taste of what it's like to play on a big stage with professional lighting and sound.

Rockshop spokesperson, Hamish Jackson, said the prize makes a real difference to a school music department.

"The prizes we provide go straight to the music department and help to build on the momentum of having their students perform in Bandquest. We love to see the continued increase in kids making music, because the outcomes are so positive for everyone

involved, including the school and community."

Te Horo School's seven piece band included Holly O'Sullivan (electric guitar/vocals), Frankie Vidulich (acoustic guitar/vocals), who also won the 'Musicianship' award, Danielle King (acoustic guitar/vocals), Hannah Bruce (percussion, vocals), Kaia Pollock (bass guitar), Ethan Mackay (keys), and Scott Watson (drums)

'The Vibes' prepared for the Wellington regional final by putting in many hours of practise including several pop-up concerts during lunch breaks (the school also runs a weekly comprehensive music programme with Yemma Barsanti). The band was mentored/tutored by Anje Glindemann and Richard Guerin.

The band presented two songs at the competition, Taylor Swift's 'I Knew You Were Trouble' and 'Zombie' by the Cranberries.

"They finished a fantastic rendition of 'Zombie' with a rousing excerpt from the school haka," said Anje, adding "the haka is called 'Ma te mahi,' which means actions speak louder than words, and it's also the

school motto."

She said 'The Vibes' were more excited than nervous, and "really lifted their performance to take second place."

Founder and director of Rockshop Bandquest, Glenn Common believes there's been an increase in the level of sophistication and performance skills from kids of intermediate age.

"They're watching YouTube, they're following aspirational heroes in the Kiwi music scene, and they've got access to recording gear as close as the iPad at home. Bandquest gives them the opportunity to put it all together in front of a real live audience, and the results are impressive."

**Paddy's Mart**

Te Horo School's annual fair is set for Saturday, 10 September (gates open at 11.00am).

A major fundraising event for many

years, the fair is "a good, old-fashioned fun community day." The school can be relied on to produce an amazing Paddy's Mart, a mixture of traditional and fun ideas and games. There will be more than 30 stalls offering produce, books and toys, cakes, plants, bric-a-brac, and crafts.

**Te Horo Country Market**

Te Horo's community monthly market with loads of local produce and products – grown, made or baked in Te Horo. A great opportunity to support local producers, enjoy a friendly atmosphere and grab a bargain.

Sunday, 4 September, 10.00am till 12.30pm at Te Horo Hall.

**BYO Drinks and Nibbles**

Catch up with neighbours or meet 'newbies' in the area at monthly, social get-together. Bring a plate of nibbles to share and something to drink. All welcome.

Friday, 2 September, 5.30pm at Te Horo Hall.



The Vibes L-R Holly O'Sullivan, Ethan Mackay, Kaia Pollock, Frankie Vidulich, Scott Watson, Hannah Bruce, Danielle King Photo credit: Anje Glindemann

**Kite festival co-ordinator appointed**

Kirsty Doyle will be co-ordinator for the 2017 Ōtaki Kite Festival.

The Ōtaki Promotions Group, which runs the festival, says the role has been created to ensure the event continues to be professionally organised. Earlier this year up to 18,000 people attended throughout the weekend.

"The kite festival has grown in three years to become the premier event on the Kapiti Coast, and the best kite festival in New Zealand," says OPG chair Ian Carson. "We've had fantastic people co-ordinating it in the past, but it's become a big job that we believe requires a paid position.

"Kirsty is a great organiser with good local contacts who I'm sure will manage to build the festival to be an even better event."

Barbara Franks and Carol Ward previously co-ordinated the festival voluntarily, but Barbara now has commitments in Wellington and Carol is unavailable in the month before the 2017 event. Both are assisting Kirsty to ensure the transition of roles goes smoothly.

"They have both done a great job with a huge number of voluntary hours," Ian says. "It's largely through their efforts, and the original co-ordinators Debbi Carson and



Kirsty Doyle, new Kite Festival supremo

Yvonne de Mille, that we've been able to put on such a spectacular annual event."

Kirsty is a part-time sports and fund-raising co-ordinator at Ōtaki College and is a qualified lifeguard and secretary at Ōtaki Surf Life Saving Club, where she's also involved with coaching, management and administration. For the past four years she's been a member of the local area sports committee and she's been a Capital Coast representative of the Central Region Sport Committee.

The 2017 Ōtaki Kite Festival is to be on the weekend of 25-26 March.

**RECORD SALES**

Record sales of sections and bare land blocks: The future for the building trade looks good in our area says Grant Robertson of First National Ōtaki. Sales of sections have reached unprecedented levels, both by number and by value.

With prices for the few available in Raumati reaching \$300,000, and those in Waikanae exceeding \$200,000, the focus has come on Te Horo, Ōtaki, and Manakau.

One development at Te Horo beach had proceeded steadily with 8 sales in 7 years, and has had 7 sales in the last 8 months! At higher prices than previously.

The new development at the top end of Te Manna Road on the Ōtaki Plateau has seen 8 pre-launch sales, at prices not seen since the top of the last strong period in 2005.

When we started First National Ōtaki in 2008, there were over 80 blocks of land available in the Manakau district, we now have barely 20 left to sell, and the situation is ripe for higher prices soon.

All these sales augur well for new house builds. Some builders are now starting to build without pre-sales, in anticipation of strong demand continuing. Building suppliers, plumbers, driveway tarsealers, landscapers and Councils will get even busier as the Expressway spend surges through the veins of our local economy, bringing ever more people to our 'quaint' and friendly Villages!

To enquire about the largest selection of sections and bareland blocks contact Grant or Derek now.

**BEACH BABY - OTAKI SEA VIEWS!**

39 Manuka St, Ōtaki Beach



Built in the swinging 60's here is a classic of its time - with all the charm and character of its youth retained. This is a unique gem of a property. With panoramic sea views, three spacious double bedrooms which look out to sunroom and courtyards, a huge living room with woodburner. Funky

kitchen and breakfast bar, internal access garage, and only a hop, skip, jump to the beach!

View now or miss out. (Offers expected over \$390,000) To be sold by DEADLINE SALE closing 11am on Wednesday 14th September 2016 (if not sold prior)



**Grant Robertson**  
021 660 113  
grant@fnotaki.co.nz

238 Main Highway  
Ōtaki  
06 364 8350



3BR Realty Ltd. Licensed REAA 2013  
Ōtaki First National is the real estate specialist for Ōtaki, Te Horo, Manakau and surrounds.

Lifestyle or Residential, whether you are buying, selling or renting, you will always be treated as our top priority.



**Derek Kelly**  
021 0832 6460  
derek@fnotaki.co.nz

# Whiti Te Ra triumph...continued from front page

photo credit: Whare Akuhata



Raahiri Connor went through a couple of tackles and with a Te Aroha Eel player on his back scored the second try for Whiti.



It was about being a whanau and having each other's backs. Dane Cooper sharing the moment with his bro.



Another great run by Dane Cooper with captain Manaia Osborne in support



Whiti Te Ra! Tangata Manihera and Whiti juniors celebrating & honouring the premiers

**Whiti Te Ra 26**  
 Jake Cribb,  
 Rāhiri Connor,  
 Aaron Whitikia,  
 Mania Osborne,  
 Chevy Graham  
 tries;  
 Himiona Henare  
 3 goals,

**Te Aroha 24**  
 Manu Anae 2,  
 Anthony Utanga,  
 Jon-Marc Stowers,  
 Tony Sukroo tries;  
 Tane 2 goals.

Halftime:  
 Te Aroha 14-12.

## TE WĀNANGA O RAUKAWA

*E kore au e ngaro he kākano i ruia mai i Rangīātea*

As an educational institution Te Wānanga o Raukawa concerns itself with maintenance and dissemination of existing knowledge (te whakahōrapatanga o te mātauranga) and creation of new knowledge (whakatupu mātauranga). We regularly hold symposia covering the range of our programme offerings, primarily for the benefit of our students so that they are well informed of current developments within their respective area of study and to give them the opportunity to engage with experts involved in a range of fields that contribute to the mātauranga continuum. The outcomes for students include being propelled to 'next steps' and thinking about how they want to contribute to whakatupu mātauranga. These events are also an opportunity for us to acknowledge the contributions made by kaiāwhina who remain a strong presence in most of our programme offerings; to share mātauranga Māori frameworks/approaches and to increase the reputation of Te Wānanga o Raukawa as a centre for debate and Māori knowledge generation.

The wānanga is also keen to promote healthy lifestyles for its students, kaiāwhina and staff and the wider community. For some years it has actively discouraged the consumption of alcohol and other drugs and cigarette smoking while they are within the wānanga environs, and has this year made the decision not to buy any more refined sugar within the central campus kitchen that provides meals and other refreshments to students and visitors.

### Coming Events

#### Pūtaiao and Rongoā Symposium

*Na Tāne i toko, ka mawehe a Rangī rāua ko Papa, nana i tauwehea ai, ka heuea te Pō, ka heuea te Ao*

On Saturday 3 September we are scheduled to present a pūtaiao and rongoā symposium, that will have as its theme 'Papa-ue-nuku: From Wisdom to Enlight-

enment to Innovation'. This gathering will be the fourth in a series of pūtaiao/rongoā symposia, will include presentations from rongoā practitioners, environmental scientists and Te Rōpū Taiao o Ngāti Whakare, an iwi-based environmental group; and will be capped off by two keynote speakers of national renown. The symposium will involve all pūtaiao and rongoā students with the focus of building relationships with local rongoā networks. Invitations have been sent to organisations that have a relationship with the pūtaiao and rongoā programmes, to attend and display their products.

This symposium, as with others previously held, is limited to enrolled students, local environmental organisations and local rongoā practitioners. However, future symposia may be opened to other interested groups.

#### Prostate Cancer Foundation NZ Fundraising Dinner

Date: Friday 16 September  
 Time: 6 p.m.  
 Venue: Te Wānanga o Raukawa Wharekai  
 Cost: \$40 for individual ticket; \$300 for a table of 8  
 Contact: Ramari Ropata or Merrin Taratoa  
 Status: Open to all

#### Tama Tū Tama Ora, Tama Noho Tama Mate

As a contribution to health promotion the idea of having a Blue September fundraising dinner to raise awareness of prostate cancer, and importantly, prevention measures, was raised by staff members Ramari Rikihana and Merrin Taratoa. The idea came as a result of a very successful Pink Ribbon breakfast held at the wānanga earlier in the year to raise funds for breast cancer research. The promoters were keen to build on that and find further opportunities to lift the health status of members of the local community. Liaison with the Prostate Cancer Foundation provided support and determination to follow through

with the idea.

As part of the awareness campaign there will also be free health checks for men and women at Ngā Purapura earlier in the day. These will include general discussions and hauora displays, with opportunities to talk with health professionals from the local PHO and Te Rūnanga o Raukawa about any concerns. The focus will be on being well and staying well.

The wānanga is keen to encourage local businesses to 'go blue' for the day. Ideas include placement of blue balloons inside/outside premises; wearing blue clothing; blue face paint; blue banners showing support. Ideas are only limited by imagination. We have already had support through the offer of free printing on t-shirts that will be worn by staff on the day.

The dinner will be compered by Dene Ainsworth, a graduate and former staff member of Te Wānanga o Raukawa and prostate cancer survivor.

The special guest speaker will be former All Black captain and prostate cancer survivor, Wayne (Buck) Shelford.

In line with our general policy this event will be alcohol-free and smoke-free.

The evening will include an auction of goods gifted by wānanga suppliers. Anyone who attended the Pink Ribbon breakfast will remember what a good time was had at that event which we fully expect to be repeated. Prostate Cancer Foundation merchandise will also be available for sale.

50% of ticket

sales will go directly to the Prostate Cancer Foundation. 100% of auction proceeds and merchandise sales will go to them.

A feature of the Pink Ribbon event was a Remembrance Wall where participants could record the names of cancer victims on pieces of card that were subsequently buried beneath a kowhai sapling on the wānanga campus. We anticipate having a remembrance wall at this event also and after a few days, burying the cards in the same location.

We hope that the community will support this event by taking some time during the day to come along to Ngā Purapura to become familiar with health issues and what can be done in order to stay healthy; and by purchasing tickets for an evening of what promises to be entertaining and informative fun.

*Korihi ake ngā manu  
 Tākiri mai te ata  
 Ka ao, ka ao, ka awatea!  
 Tīhei mauri ora*

Visit us at 144 Tasman Road, Ōtaki

Phone us at 0800 WĀNANGA  
 Visit our website at [www.wananga.com](http://www.wananga.com)  
 Email us at [tetomonga@twor-otaki.ac.nz](mailto:tetomonga@twor-otaki.ac.nz)



Ramari Rikihana beside the Remembrance Tree at the Breast Cancer Foundation fundraiser held at the wānanga earlier this year

# Ōtaki Scholar visits the College

BY MARGARET ANDREWS

Jamie Seedhouse, the 73rd Ōtaki Scholar was welcomed to Ōtaki on a fine, but chilly midwinter's day, no doubt similar to his home town Aberdeen Scotland, with a powhiri at Raukawa Marae. Ōtaki was the first stop on his New Zealand visit.

Among the official party and visitors at the marae were Dr Robin MacLachan who was the 16th Ōtaki Scholar in 1962 and Royal New Zealand Navy Rear Admiral (retired) David Ledson, who spoke to those present.

"We are brought together by the actions of one man, Captain Archibald Bisset-Smith, captain of the New Zealand SS Ōtaki," he said. SS Ōtaki was a merchant ship carrying supplies to England during World War I. "Fourteen thousand merchant seamen were lost during WWI, including one 15 year old boy, a Robert Gordon's College old boy. Captain Bisset-Smith was also a Robert Gordon's College old boy and in 1937 his family presented the Ōtaki Shield to the College in his memory. The greater our knowledge of the past and the circumstances of the day, the better prepared we are for the future."

Jamie also spoke of Archibald Bisset-Smith and the sea battle with the German invader.

"At the end of each (school) year, the Ōtaki Shield is awarded to the Robert Gordon's College captain (head boy)," he said of awardee of the shield.

The rest of the Monday was spent visiting many of Ōtaki's historical sites and places of interest.

Over the remaining three days Jamie and seven new international students, were welcomed to Ōtaki College with a whakatau – a short powhiri and an opportunity to mix with the students and tour the college. Later he had his first IRB ride with Ōtaki Surf Lifesaving Club's Peter Housiaux, who also organised a trip up the Ōtaki River by jet boat on the Thursday. Wednesday there was a round of golf with some of the College staff at the Ōtaki Golf Club, with a tour round Paraparaumu and visit to Southwards Car Museum, back to the Ōtaki Museum followed by 10pin bowling with the College student leaders.

But before his adventures began, he spent time with the

Ōtaki Mail telling a bit about himself, his interest and his home. Having told the College assembly he had spent his first three years in India "don't remember much of that time". During his years at Robert Gordon's College he played rugby – toured Italy with the College 1st XV last year, cricket, badminton and golf for the College and studying geography, history and maths in between. He plans on beginning a law degree at Glasgow University when he gets back home mid-September. He lives at home with his parents and younger sister, in a "sports mad" family - Mum and Dad are both keen golfers - Mum off a 5 handicap, she played hockey for St Andrews University and Scotland, while Dad played rugby for university and his sister plays hockey.

After the thrills of Thursday's jet boat ride, he flew to Blenheim for the next stage of his New Zealand visit. The other towns he will visit – Nelson, Christchurch, Dunedin, Wellington, Napier, Rotorua, Kerikeri and Auckland colleges, where he has been informed he will be involved in kayaking and basketball in Nelson, golf and the college ball in Christchurch and plenty of rugby in Rotorua.

The NZ Shipping Company ships traded through the ports in these towns and cities and the company's ships were named after them, the SS Ōtaki traded through Ōtaki and was named after the Ōtaki River.



Jamie Seedhouse the 73rd Ōtaki Scholar to visit Ōtaki College, wears the korowai which will be worn by visiting the Ōtaki Scholar when he arrives and worn by the Ōtaki Sander Scholar visiting Robert Gordon's College Aberdeen

What's been happening in **Ōtaki**  
in the last **3 months!**  
1st May to 31st July 2016

<b>Residential Sales</b> <small>(not including residential sections)</small>	<b>33</b>
<b>Average time on the market</b>	<b>37 days</b>
<b>Average Sale Price</b>	<b>\$270,000</b>
<b>Average % &gt; RV</b>	<b>27.5%</b>
<b>Highest Price Paid</b>	<b>\$480,000</b>
<b>Lowest Price Paid</b>	<b>\$169,000</b>

'Spring Clean' **\$500 FREE**

List your house with us  
in the month of **September**

And we will pay **\$500** toward cleaning  
and tidying your house and garden

**Inside - Outside - or Both**

**Call Us NOW!**

Terms & Conditions Apply

**Jenny Rogers**  
021 244 9796

**Sarah Lange**  
022 317 7613

**Sally Saunders**  
027 093 4510

**Professionals**  
Real Estate & Property Management

Professionals! 1st for Property Management on the Coast

Jenny Rogers our Ōtaki Property Manager letting and tenanting properties in Ōtaki for 20 years - Call her today for excellent management service!

Disclaimer: These figures were compiled from REINZ collated monthly sales data. We assume all information is correct at time of print but take no responsibility for any inaccuracies.



BY MARGARET ANDREWS

Ōtaki Community Board chair, James Cootes, declared the July 26 meeting of the Board open, welcoming all present and congratulating all Ōtaki recipients, individuals and organisations who received Kapiti Civic awards with special mention of the Maoriland Film Festival organisers who took out the Kapiti supreme award.

**Grant Applications:**

There were eight applications for funds, four each from the Community Grants and Sporting Activity funds. Seven were approved and each was awarded \$500.

**Community Grants Fund:**

Energise Ōtaki: to fund gardener, Hannah Zwartz to work with students to reinvigorate the Ōtaki College school garden and horticulture block and ultimately supplying produce to the college kitchens and wider community. Several Ōtaki groups are involved in the work, too. The application was spoken to by an Energise Ōtaki member.

LOVED4LIFE's applied for funds to assist with purchase of fabric and knitting wool to provide bassinet sized quilts for new-born babies in Ōtaki and knitted woolen garments, particularly for winter and premature babies. A meal is also provided for the family during the first few weeks after baby is born. Lynne Judson spoke to the application.

Ōtaki Community Patrol's coordinator and training officer, Errol Maffey, spoke to their application, outlining the increase in volunteers over the last 12 months, also noting the 5000 kilometres travelled and 900 hours of patrols and administration covered. The costs of keeping the patrol car on the road are extensive and \$500 would cover petrol costs for two to three months.

Compassion in Action Group: as there was no one present to speak to the application, it was not approved.

**Sporting Activity Grants Fund:**

Paris Pidduck spoke to her selection to the New Zealand Women's canoe polo team to compete at the World Championships in Sicily in August, noting Ōtaki's Peter Housiaux was the team coach and Jane Bertelsen team manager with several team members from Ōtaki and Horowhenua.

Seuga Frost from the Kapiti Swimming Club spoke to their application for funding to assist with cost of lane hire at Haruatai Pool for club members training and swimming lessons. They mostly require two lanes per session.

Riria Ropata applied for funds to assist her to compete at the National Power Lifting Classic championships in Christchurch. She has previously won two novice awards and one regular competition award. As Riria was at a training session, her mother Tania Rikihana spoke to her application.

Ōtaki Surf Club IRB Classic team applied for funds to assist with expenses to take part in the 90 Mile Beach IRB Classic event, a Surf Lifesaving NZ endurance race down the 88kilometres of the beach with three on shore challenges en route. The rescue boat team is Joshua Braddock, Sophrose London and Rob Bigwood, with support crew Elle Warwick, and Jamie Bigwood who will drive down the beach with fuel and food supplies and emergency equipment.

**Kapiti Performing Arts Centre presentation:**

Kapiti College principal, John Kane spoke of the need for a performing arts centre at the college and had a PowerPoint presentation of the proposed building and its facilities, which would include a 300-350 seat main theatre, black box theatre which has no set stage or seating, classroom and rehearsal places.

"Kapiti is a very arty area and a very, very arty community," he said. The centre would be available for college, schools and community use. "we have consulted with theatre, dance and arts groups for information on their needs."

Peyton Morete, former Te Horo School pupil, who won the 2016 Manawatu Rockfest solo section sang one of her own songs self accompanied by guitar.

The new centre is expected to open late 2017.

**Report from Greater Wellington Regional councillor Nigel Wilson:**

Mr Cootes thanked GW for requests approved during the year, but the proposed rejig of the bus routes and trips gave no more buses, just rejigged times and decrease in number of trips.

"Public transport issues include scheduled times, which make for youth employment difficulties, there is no public transport north of Ōtaki" he said.

Mr Cootes also noted issues with (lack of) bus shelters in Ōtaki – currently only four - one in each of Tasman Road and Aotaki Street and two on the Main Highway. Mr Wilson said they (GW) were putting together a paper "at the moment".

On the rail network and possible double tracking or extending the urban rail to Ōtaki, he responded currently there was no interest in doing so. GW has no spare diesel engines and there is only one (possible) in Auckland. The council have looked at a possible alternative shuttle service, running Waikanae-Ōtaki pulling carriages during off peak hours, but "it was not a big money earner". He noted there were no options (currently) on the table. There is a possible proposal for a service Ōtaki to Levin with funding from Horizons, GW and Ministry of Transport.

Bus services: GW is looking at a shopper service from Te Horo Beach, which would be based on the Paekakariki and Otaihanga service to Coastlands. "It's a matter of identifying (residents) needs; Te Horo residents are talking more a Te Horo Beach to Ōtaki service.

**Chairman's business and members activities:**

Mr Cootes had attended a meeting with the Ranguru-by the Sea group and KCDC's Sean Mallon re concerns several issues at the south beach area. He had attended the powhiri for the 2016 Ōtaki Scholar at Raukawa Marae, the annual Kapiti Civic Awards night, a Wellington public transport meeting and the launch of the new basketball court at Haruatai Park, noting the presence of Wellington Saints shooting guard Jordan Mills.

Following the storm of July 23-24, he had visited areas in Te Horo checking for property damage from fallen trees and issues

with windblown debris.

Member Rob Kofoed had been checking on demand for a footpath on Riverbank Road, produced kiosk plans for Friends of the Ōtaki River and assisted with the Ōtaki Civil Defence children's emergency colouring competition.

Christine Papps reported there were 80 orders for curtains from the Wellington Curtain Bank, these have arrived and been distributed. Thanked members and community who had supported the garden renewal work at Ōtaki College, led by gardener Hannah Zwartz.

Councillor, Penny Gaylor had attended the reopening of the Ōtaki Gorge Road at Blue Bluff, noting the gorge road was the gateway to the Tamaroa's bringing many people from outside the region to Ōtaki. She also attended the powhiri at Raukawa Marae for the Ōtaki Scholar, noting March 10 2017 will be the 100th year since the sinking of the SS Ōtaki, a NZ marine ship carrying supplies to Great Britain during World War I. There will be significant commemorations in Ōtaki as well as Edinburgh's Robert Gordon's College where Captain Archibald Bassett VC had been a pupil.

**Draft Submission to the Greater Wellington Regional Council annual plan:**

Following discussion on the ŌCB draft submission, Mr Wilson said if the Board had any extra needs "I can put them in my submission."

Mr Cootes informed him the bus shelter from Te Horo Beach Road, promised to Ōtaki, has been resited on Kapiti Road "we would like it here".

Also there has been a request for toilet facilities at the Ōtaki River mouth area, which would be responsible for financing? Mr Cootes asked. Mr Wilson said he didn't know but thought it was a Kapiti District Council thing!

The final meeting of the current Ōtaki Community Board for this triennium will be held on September 6, at in the Gertrude Atmore Supper Room at 7pm.

**Shooting for Kids**

BY MARGARET ANDREWS

One of New Zealand's tallest Breakers and Tall Blacks players, Alex Pledger spent two days visiting schools across Kapiti recently with Roger Booth and Kapiti Kids Motivation Trust.

One of the schools he visited in Ōtaki was Waitohu, where the all the pupils and teachers waited expectantly in the school hall for the 2.153 metre (7ft. 1in) basketball player to arrive – with a careful duck under the doorframe as he entered the hall.

Two pupils, Declan Prentice and Hannah Thompson had prepared series of questions from the pupils ready to ask Alex, from school days, to basketball and "do basketball players get paid much money – not millions like some sports, but enough to pay the bills; to favourites – foods - Hawaiian pizza and ice cream but to keep fit he eats a lot of vegetables with broccoli his favourite, steak and chicken and occasionally McDonalds or fish and chips; clothes – Michael Jordan basketball shoes; superhero – Superman; cartoon – Flintstone or Family Guy; car - Holden Malibu "hard to get a car big enough; animal – parrots and his dog Forrest.

Height has always been a "difficulty, he said in reply to a question from the children "Cars with enough room, trousers that are long enough for my legs which are over 1metre long and shoes, "I'm size 16."

"I've always been taller than friends and family. When I was in year 11, I grew

7inches, that's 18 centimetres. I have three brothers, only one is 6ft7in," he said "My Nana is only just over 5feet (1.53m) – I prefer my height." He's 2feet or 63cm taller than his Nana.

Another indication of his height is a basketball hoop is 10ft high, Alex standing underneath with his arm raised is 9ft.6in or 2.89m.

When during school years he played rugby, cricket and soccer and turned to basketball at 16 after an approach from NZ Under 16-18 basketball teams' coach, Doug Courtney who encouraged him to trial for the Fraser High team. This led to a move to Hamilton Boys High and later onto top level NZ teams. At age 17 he was training five days a week at 6am or 18months. He made it into the Junior Tall Blacks after that.

When asked what it felt like to play for the Breakers and Tall Blacks he replied "Playing for the Tall Blacks. There's no better feeling than walking out on the court with a black singlet on."

Alex told them of one of his most memorable games. It was the 2009 qualifying games against Australia, and "We were the underdogs and lost the first game by seven points. We'd lost our nerve, but came back in the second game and won with our biggest score.

"Resilience and perseverance are the most important things to work on." he told the children. "We worked hard and made the finals six years in a row and won five years. The year we lost we looked at

ourselves. Came up with a plan to bounce back from the disappointment, and got back into the final and won."

During his early playing years he spent three years playing college (university) basketball in Kansas City and Belmont in USA; back in NZ he played league basketball for Waikato, Auckland and more recently Southland.

The visit to Waitohu was a little different in that the children had a set of questions to ask, instead of the visitor telling a bit about himself and answering questions from the floor.

"I loved the visit." he said. "I enjoyed telling the unique story of how I started playing basketball. For this visit, the (school) kids had questions prepared."

Alex also visited Ōtaki College and Ōtaki School plus another seven schools between Waikanae and Paekakariki and held a coaching session at Kapiti College gymnasium, before flying back to Auckland on the Wednesday night.



The long and the short....Alex Pledger with two Waitohu fans

# Taking Ōtaki's pulse

Live well, get well, stay well

## Ōtaki Community Health Centre

186 Mill Road, Otaki

Monday – Friday

Ōtaki Women's Health Centre	Yoga
Sexual Health Clinics	The Hearing Company
Cervical Screening Clinics	Templeton & Associates Accountants
Counseling	New Zealand Association of Counsellors
Total Mobility Agent	Ann-Marie Stapp – Social Work Practitioner
Health Information	Mercedes Anonymous
MidCentral DHB	The MeroShed
Alcohol & Other Drugs Service,	Meals on Wheels
Child, Adolescent & Family Mental Health	
and Adult Mental Health Service	

Rooms available for rent, long or short term  
For information on services phone Janet or Michelle on 364 6367

## Expecting?

BARNARDOS  
Bumps to Babies

- Prepare for pregnancy, childbirth and the transition to parenthood
- Learn about caring for your new baby
- Connect with other expectant parents



Get in touch to learn more today  
Free phone: 0508 247 8433  
Email: bumpstobabies@barnardos.co.nz  
Web: www.barnardos.org.nz/bumps-babies



### STRESSED OUT?

Free counselling is available  
For Parents/Caregivers with children 0 to 17 years.  
Ōtaki Women's Health Centre  
Is offering free counselling Tuesdays by appointment

06 364 6367

Anyone affected by cancer, whether they are the patient or support person is welcome to contact our new coordinator, Amber Marshall who extends an invitation to the Ōtaki Community to have a monthly support group meeting starting on the 28th June.

Amber.Marshall@cancersoc.org.nz

PH 06 367 8065 FAX 06 367 8057 Mobile 027 542 0066



Cancer Society shop 112 Winchester Street, Levin  
Hours Mon-Fri 9am-3pm

## OTAKI MEDICAL CENTRE

### Notice to our patients

Effective Monday September 5th  
the standard consultation fee with  
the GP will increase by 50c.

This will be the first increase in GP  
consultation fees since July 2013.

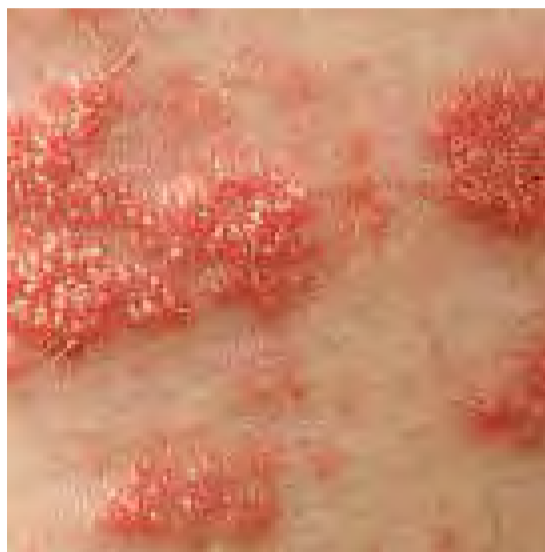
## Suffering Shingles.

There seems to be a bit about at the moment. This nasty legacy from a childhood dose of chickenpox can hit adults without warning. Shingles is caused by the same virus as chickenpox; herpes zoster and is common in people over 50. One good thing is that you cannot catch it from someone who has it active in their system unlike chickenpox, but the fluid in the blisters carries the virus and can be contagious.

This sleeping hidden virus can remain dormant: it lives in the roots of your nerve cells near the spinal cord. There is no clear reason why it suddenly returns to life but some theories are:

- a weakened immune system (eg, by immune-suppressing medicines, another illness or after major surgery)
- a complication of cancer or AIDS
- long-term use of cortisone-type drugs
- after the skin is injured or sunburned
- emotional stress.

The first symptom of which is usually a tingling, sharp, burning pain under the skin, followed after 1-3 days by a red rash and blisters. It usually affects the face, upper abdomen or back and only on one side of the body. The pain can be severe in older people and usually accompanies feeling generally unwell, chills and fevers, an



upset stomach and enlarged lymph nodes. A red rash appears after a few days over the painful area of skin followed quickly by the development of small, fluid filled blisters. The rash can be quite itchy. Within a few days of appearing the blisters dry and crust over. It is possible for the blisters to cause mild scarring. The blisters will appear as a band or line over the nerves. Full recovery from the condition usually

occurs within 2-3 weeks, or up to 4 weeks in older adults.

Treatment is rest and time, with pain relief as needed. Antiviral medicines can be prescribed as well as lotions and creams. Steroids may be needed if the attack is severe as well as antibiotics but only if the rash becomes infected. Acupuncture can also be effective in relieving symptoms in some cases.

Most complications of shingles are very rare, but it is still important to consult a doctor as soon as shingles is suspected so that an accurate diagnosis and appropriate treatment can be given. This is especially important for those people with a weakened immune system.

There is a vaccination available. Ask your doctor if it is suitable for you.

## ACC, Mates and Dates : Keeping our kids Healthy and Safe

Mates & Dates is a healthy relationships programme for secondary school students. It's designed to help prevent sexual and dating violence by teaching young people relationship skills and behaviours to carry with them throughout their lives. It's about all kinds of relationships, including friends and family. Mates & Dates is a multi-year programme that is taught to years 9-13 in one 50-minute session each week for five weeks. It supports the four underlying and interdependent concepts by teaching kids respect and to:

- have healthy relationships based on respect, negotiation and consent
- identify inappropriate behaviour
- get help if they, or someone they know, are in an unhealthy relationship
- safely intervene in situations that could lead to harm.

ACC has become involved because research shows:

- 15-24 year olds are the group most at risk from violence by current and ex-partners
- 1 in 5 female and 1 in 10 male secondary school

students report unwanted sexual contact or being made to do unwanted sexual things

- 37% describe it as severe and 57% tell no-one.
- working with young people is one of the most effective ways of preventing sexual and dating violence.

Schools are already working to teach young people about healthy relationships. ACC wants to build on and strengthen that work. It was piloted in eight secondary schools around New Zealand in Term 3 of 2014. The results have seen some improvements in the programme by

- redesigning content to make sure it is relevant to young people in New Zealand
- developing content to meet the needs of Maori, Pasifika and people with disabilities
- partnering with schools and teachers to make sure Mates & Dates is well understood and supported by school communities.

The programme will continue to be available to all interested schools and that is good news for our kids in keeping them healthy and safe.

## Defibrillators in Ōtaki: Past and Future

There has been some recent publicity about whether or not Ōtaki has defibrillators available in our community. The answer is yes.

Between 2008 -2010 the Ōtaki Community Health Trust spent \$25,000 on providing the community with seven defibrillators. The Trust also arranged and paid for training in their use as you can't just grab one and use it safely.

The defibrillators were offered to groups and clubs who were prepared to undergo the training and who were accessible to a wide number of people. The RSA, the Golf Club, the Surf Club, the Te Horo Rural Fire Brigade and Raukawa all received one. The communities of Manakau and Te Horo Beach also wanted to be able to provide the service and received the training and have one available.

In addition to the ones provided by the Ōtaki Community Health Trust, the Ōtaki Fire Bri-

gade, the Ōtaki swimming pool and the Ōtaki Medical Centre also have them.

Moves are now afoot in Ōtaki to get some more. There are a couple of community groups talking with the Kapiti AED Trust in Waikanae which has already provided five defibrillators in public places. They have also trained 335 Waikanae people how to use them. The Ōtaki Mail will provide further updates on progress as they become available. As time moves on those original Ōtaki residents who were trained back in 2008 - 2010 may themselves have moved on and there is a need to regenerate trained people and publicise the availability of current defibrillators and the placement of new ones. Without doubt they save lives, and this new initiative by Susie Mills and her Trust in providing more defibrillators in accessible places can only be a good thing to build on what we already have.

**Te Reo help wanted**

Do you live in the Te Horo Beach area, and can you help someone who wants to learn Te Reo?

A 28 year old man confined to home with chronic health problems is keen to learn.

Phone Christine on 364 2476

**Holographic Kinetics  
an Aboriginal Healing Modality.  
Working with your Spirit and  
Universal Love  
Finding cause to effect, Releasing stress,  
Balancing current imbalances**

**Contact Mary 022 396 1589  
for more information**

**Holographic Kinetics**

Mary Smith is offering spiritual healing, based on aboriginal teachings.

HOLOGRAPHIC virtually explains man is a hologram--every cell in the body stores every thought and memory as it is sent from the subtle bodies within, out to all areas of the physical body and each cell has the ability to holographically reproduce those memories. These areas are called "cellular memory" and can store trauma from generations down the hereditary line--they can be accessed and cleared.

KINETIC energy comes from the harmony of the Infinite universe, as free flowing balanced energy. When captured by the act of a thought, it becomes potential energy, aligning itself into plutonic geometry forming a crystal, which now stores memory and locks into the stress point of the body--in its own separate dimension known as "time". This is created by the universal mind of its creator, passing through the cellular memory of its being.

If this takes your fancy, you can consult Mary at The Arcade on Mondays.

**Exhibitions, Prizes and more on offer in Heritage Month**

Ōtaki Museum joins forces with other members of the Discover Kapiti Heritage Group to showcase the district's rich and vibrant history with exhibitions, talks and other activities during Heritage Month.

Discover Kāpiti Heritage Group chairperson Allan Carley says, "This event promotes the history of the district and is part of the Wellington Heritage Promotion Council's annual event."

"This is an ideal opportunity for people visit more of the museums, learn about our amazing past and be in the draw for some great prizes. We wish to thank all our sponsors who help make this event successful," Mr Carley said.

Ōtaki Museum's exhibition, *Not Only Te Rauparaha & Hadfield but also ...* shares its name with local historian Rex Kerr's latest book and features 37 of the 100 personalities whose stories are told in the book. While some are very well-known and others less so, they all have made a significant contribution to the town and district. The exhibition closes on Saturday 1 October.

The *Lens and Lead*, exhibition at the Kapiti Coast Museum, Waikanae, focuses on the Ruddleston Trophy Deer's head originally displayed in the late Waikanae Hotel. The exhibition features videos, photos and

artefacts provided by Kapiti Deer Stalkers Association, Deer Museum, MANAKAU, Hunting and Fishing Ōtaki and the Kapiti Photographic Society.

Five early paintings by Frances Hodgkins and Girolamo P. Nerli will be on display at the Mahara Gallery, Kāpiti's public art gallery, Mahara Place, Waikanae. These works have been borrowed from the Field Collection and Hodgkins curator Avenal McKinnon. Mahara Gallery Curator Janet Bayly gives a floor talk in this show on Saturday 10 September at 2pm.

A display 160 children's artwork in *Te Whenua, the land*, its fifth children's art and environment project with a Kapiti school and Nga Manu Nature Reserve, is also featured in the gallery during Heritage Month.

Cars, trains, planes and trams from days gone-by can be marvelled at in Kapiti's transport museums: Southward Car Museum at Otaihangā, houses over 350 automobiles and other exhibits including aircraft, bicycles, a range of vintage tools and other automobile memorabilia and even a vintage Fire Engine.

Visit the Discover Kapiti Heritage Group website [www.kapitiheritage.org.nz](http://www.kapitiheritage.org.nz) for more information about the Heritage Month programme.

**Thanks for the Music**

BY RON GIBBARD

"Thanks for the Music" was the theme for a Ball held in the Ōtaki Memorial Hall recently. The Hall was transformed in a blaze of black and white decorations with a Music theme. 120 locals and visitors enjoyed fun, dancing, live band entertainment and a delicious supper.

This was the 16th successive Ball organised by the Ōtaki Dance Group now headed by locals Barbara and Mike Francis, Richard

and Gillian Tunley and Edith Rodriguez.

Sequence Dancing involves a variety of dance styles - including Waltz Tango Quickstep and Rhumba. Unlike freestyle dancing each couple dances exactly the same sequence of steps.

It is a great activity that you can learn from scratch. The Ōtaki Dance Group meets each Tuesday at 7.30 pm at the Memorial Hall. Newcomers are most welcome.



Centre Paddy and Jan Ludlam, Peter and Maureen Jensen and Max Lutz(Right)



Hundreds of metres of frostcloth, musical panels and old records were used to create the elegant atmosphere

**Discover KAPITI Heritage MONTH**

**SEPTEMBER 2016**

Check Kapiti Heritage website for details for opening hours and events

**EXPLORE HERITAGE!**

9 Museums! Ōtaki to Paekakariki

Answer 5 Q's at each museum & go in the draw to win a prize!

www.kapitiheritage.org.nz

**I.C. MARK LTD**

Locally owned and Operated by the Mark Family since 1978

**FUNERAL DIRECTORS & STONE MASONS**

Old Office

0800 426275 ~ (06) 368-8108

545 - 547 Queen Street East, Levin  
197 Mill Road, Ōtaki  
[www.icmark.co.nz](http://www.icmark.co.nz)

# The Civic Chat

BY MARGARET ANDREWS

Wow, what a month it has been with three major happenings!

First of all, *Rent*, what a marvellous production. The atmosphere was set as you walked through the foyer lined with graffiti art. From the opening chords to the finale, I couldn't find fault. To first time director, Tua Faavale - your first effort at directing wow this bodes well for future productions! Music maestro, Graham Orchard and his six piece band set the tone and pace, for the fast moving story of life in a downtown warehouse apartment in New York during 1989/90. Congratulations to all the performers, great to see several "old" faces, back to join OPS for this production, as well as a few newcomers. To the young "transvestites" well-done!

Second big news the Civic Theatre is SAFE. It passed the engineers inspection and the committee have received his report that the theatre is above the minimum 34 per cent building compliance required. So down came the blue signs! Yippee!

Auditions for *Bugsy Malone* have been held, with a good turnout of young people trying out for roles. The show has been cast and will begin rehearsals in September.

The committee apologises for the heating problems during *Rent*. A leak in the gas heater line meant we were forbidden to turn them on. Hence the commercial sized gas heater used prior to the audience entering the auditorium and the use of the smaller heaters later.

Warmer days on-coming, keep well.

Margaret

## Oh no! not A Rent Review

For a couple of old codgers, RENT proved a bit of a challenge knocking us right out of our comfort zone. Pretty much the way The Rocky Horror Show did when we were much, much younger.

The story was challenging as was the music. Being reminded of those dreadful times when AIDS was a death sentence was uncomfortable and the music too was raw and passionate.

We are greatly blessed with our Ōtaki Players and for them to let the younger members have free rein of this production was pretty special: especially a production with a theme, lyrics and music that was ambitious, demanding and defiant.

The story of AIDS and drug addiction covering a year in the life of a group of friends

squatting in a disused New York City warehouse was played out with such energy and passion that we could not help but be overwhelmed by these young people. Throw in transvestites, gays and lesbians and we got a sneak peek of what the lives were like with their despair and their love for each other.

There was some tremendous singing especially from Mimi (Hannah McMillan) and Angel (Taylor Salton). Those two will go far I think. But everybody had their own time singing solo in the limelight and did not flinch from giving us their all.

Bravo to Shaun, Nick, Taylor, Anthony, Sam, Lucy, Sarah and Hannah, as well as director Tua, music Graham and choreography Hannah. You challenged us but we went home happy and talking about it.

er and sing. The Pop Up Choir is popping up again for anyone interested in joining a choir for the joy of singing together. The Pop Up Choir under the direction of Ann-Marie will hold rehearsals for seven weeks beginning on 16 October at Anam

## Spring Sing

Anne-Marie Stapp's kaupapa is Music Matters – Connecting through accessible and affordable music. To this end she has organised two special events to entertain us this spring.

Ōtaki has another opportunity to get together

Cara 150 Ranguru Road between 2-3pm. Then it's on the road busking caroling and performing; on the streets, at the market, homes and shops.

Not only there is a chance for you to sing but there is a chance for you to enjoy six Kapiti choirs getting together to sing for you.

There are lots of singing groups in Kapiti and six choirs have got together under the direction of Ōtaki's Ann-Marie Stapp, and Myrna Mitchell along with Kapiti's David Dell to bring us 130 singers - each choir will sing some songs individually and then will join together for a mass choir.

Mark your diaries - this Spring Sing festival of Adult choirs will be performing in the Ōtaki Memorial Hall on 25 October at 2pm.

## SPRING SING 2016



Come and hear your local choirs

**Sunday 25 September 2016 2 - 4pm**

**Ōtaki Memorial Hall – Main St, next to the library**  
**Kāpiti Women's Choir & Ōtaki Ecumenical Choir**  
**Ann-Marie Stapp**

**Kāpiti Take Note Singers**  
**David Dell**

**Kāpiti Songsters**  
**Ruth Reid**

**Let's Sing Ōtaki & Levin Community Choir**  
**Myrna Michell**

**Entry fee: \$5 adults**  
**Gold coin for seniors and children**

Thanks to the KCDC, Ōtaki Community Board for assistance

## ABC – Authors Book Corner - Glenn Colquhoun

### Learning to love poetry

There were six poems in Renée's play 'A House to Let'. This one, reproduced here with the poet's permission, was spoken beautifully by Tammie Blundell, during the scene on immigration.

Dr Glenn Colquhoun's *Race Relations* eloquently tells us of our own history and the complex nature of who we all are.

Glenn practices medicine on the Kapiti Coast and lives in Waikawa Beach



His first book of poems *The Art of Walking Upright* was published in 1999. He has written five books of poems, all to acclaim, which explain his own origins as the son of a builder, his love affair with Te Tii in Northland where he spent some time, and a collection of love poems dedicated to his former wife.

In 2010 Glenn was awarded a Fullbright scholarship to research medical storytelling programmes. He has won the Best First Book of Poetry at the 2000 Montana Book Awards, the Montana Readers' Choice Award in 2003, and in 2004 was the recipient of the Prize in Modern Letters. Here is his story.

This has been a problem for the Scots. I can't forget what I did to myself at Culloden or what Edward Longshanks did to William Wallace in Braveheart I still hate the bastard which of course I am.

And as if that's not bad enough my grandmother's grandmother is German. And so is my grandmother's mum. One half of me has lost a war the other half has won.

Even more complicated is the fact that my mother's father's family are Jacobs which if I'm not mistaken makes us Jewish, who of course won't speak to the Germans.

### RACE RELATIONS by Glenn Colquhoun

My great great grandfather was from Luss. This is a village on the shores of Loch Lomond. My parents hang his coat of arms on their wall.

My great great grandmother was a Murray She lived in Glasgow by the Clyde. I don't know if their families fought but I wouldn't be surprised.

Some Murrays live in Whangape I guess we are related except that I am Pakeha and they are Te Rarawa. Somewhere along the line I have managed to colonise myself. It is not the first time this has happened.

My grandmother's grandfather is from England.

No one mentions they were from Tasmania. Sometimes I don't know how to live with myself. I am a civil war.

The Australians fight the English And keep the Scots happy. The Scottish fight the English And then they fight themselves The English are offended and won't speak to the Germans. This annoys the Germans Who of course annoy the Jews.

The Pakeha think they own the place the Maori want us all to go home I would if I knew where that was.

Sometimes it seems I'll never win. Sometimes I never lose.

## Birthright news

Birthright have pleasure in announcing a new Shop Manager for their Ōtaki Opportunity Shop.

Two weeks ago they welcomed Hemaima Wiremu whom the locals may recognise. She was formerly our Fieldworker. In just 1 short week she has made positive changes to the shop.

Unfortunately on her first day, they had an early meeting before the shop opened at 10am. These goods (below) had been left on the footpath outside before that time. They were **all unsaleable**.



At the back of the shop there were TVs and a Fridge freezer. These goods are also **unsaleable** and cost Birthright dearly at the tip to dispose of them.

Birthright really appreciates the generous donations from the public, but **please** can they be dropped off in the hours when Birthright is open.




### FREE COMMUNITY TRAINING

#### Building the Power of Communities Workshop

**21 September, Ōtaki & Kāpiti**

Be inspired with new ideas for grassroots community led projects with international leader in community building, **Jims Diers**.

Discover the power of community to revitalize neighborhoods.  
**Learn tools** in mapping and mobilizing community strengths  
**Gain practical advice** in building inclusive community engagement  
**Engage in new creative thinking** for potential community projects

**Register for one of the following sessions:**  
 Ōtaki Supper Room (by library) 9:30am – 12:30pm  
 Paraparaumu Hockey Turf Pavilion 2pm – 5pm

**Register by:**  
 Calling Volunteer Kapiti at 04 905 8884  
 Emailing [manager@volunteerkapiti.org.nz](mailto:manager@volunteerkapiti.org.nz)

Any questions: Contact Naomi Yeoman at Volunteer Kapiti on 04 905 8884  
 For more information [kapiticoast.govt.nz/buildingthepower/](http://kapiticoast.govt.nz/buildingthepower/)



# TRUST THE SALE OF YOUR GREATEST ASSET TO THE MOST TRUSTED COMPANY!



## THANK YOU!

FOR HELPING US STAY ON TARGET. WE'RE PROUD TO HAVE YOUR TRUST, FOUR YEARS RUNNING!

## NUMBER 1 ONLINE!



**Anna McEwan**  
027 223 2326



**Tony McEwan**  
027 445 7064



**Carel McCarrison**  
027 449 1546



**Peter Thomson**  
027 447 9811

- EXCELLENT SERVICE
- EXPERT ADVICE
- EXCEPTIONAL RESULTS

Licensed Agent REAA 2008  
Licensed Salesperson REAA 2008  
Team Group Realty Ltd

**Harcourts**  
www.teamharcourts.co.nz

PHONE: 06 364 5284

## Manakau's hidden gem

BY VIVIENNE BAILEY

Picturesque Jennings Farm is situated behind a meandering, tree-lined driveway, off SH1, just south of Manakau Village. It's easy to miss unless you're stopping for a coffee at the neighbouring Quarter Acre Café.

The farm is set in four hectares of relatively flat, pastoral land, and clothed in an amazing array of flowering trees and shrubs, many of them rare and unusual. It is home to Sam Jennings, his wife Te Aroha, infant son Sebastian, and Molly the cat.

Sam and his family bought the land and heritage farmhouse (circa 1880) five years ago. The property had previously belonged to Tony Ellis (the Hon Justice Anthony Arthur Travers Ellis, (1934-2007) and his wife Vicky, who had acquired the farm in 1997.

"It's a far cry from the Kelburn town-house we lived in," says Sam. "We wanted a lifestyle property, animals and garden, but we also wanted a place suitable for a wedding venue."

It's a warm, still spring day as Sam and I walk through the farm's various garden rooms. We're accompanied by Sebastian in his buggy, and gardener extraordinaire, Wilfred Hall.

Wilfred worked for the Ellis family (from 2004) and for the last five years has been "chief gardener" for Sam. Wilfred is a mine of plant knowledge, and pretty much knows every tree, shrub and bulb on the property.

A pergola interwoven with wisteria (sadly not flowering) and alternating with crab apple was "especially built for the daughter's wedding." Nearby is the small, deciduous tree *Forest Pansy*, a cultivar of *Cercis canadensis*, which Wilfred says is also known as Eastern Redbud. The tree produces deep purple, heart-shaped foliage in autumn and branches of pale, rose-pink flowers in spring.

This is a verdant, abundant garden (though not for the faint-hearted). Star mag-

nolia *magnolia stellata* linger amongst several puriri (*vitex lucens*), and both yellow and orange datura hang alongside various hydrangea varieties, their fat buds bursting from Wilfred's well-pruned branches.

Although planted with an enormous range of trees and shrubs, like the showy, green-white rhododendron, *Fragrantissimum* today it is the magnolias *magnolia campbelli* holding centre stage. Many are very tall, like the immense *Charles Raffill*, a show of purple-pink blooms, and *Darjeeling*, a Himalayan species with a deep pink, cup and saucer shaped flower. There is also the Californian hybrid *San Jose* whose large, milky-white flowers, tinged with pink, deliver us a sweet fragrance.

Wilfred points out a Persian witch hazel *Parrotia*. Although we've missed the small tree's dramatic autumn colour, tasselled clusters of red-crimson flowers appear in spring.

As we walk round to the citrus grove there is the ever present trail of fossicking hens.

"Gardens and chickens don't work," says Sam ruefully, although Wilfred tells me the rabbits (there are many) are also a menace, often stripping new plantings bare.



The tree covered in enormous, grapefruit-like fruit is a *pomelo*, says Wilfred, adding "a really bitter membrane separates the segments, but the flesh is less bitter than grapefruit."

There are 39 varieties of fruit and nut planted, including the Japanese raisin tree *Hovenia dulcis*. This hardy, deciduous species produces peculiar, pretzel-like, brown twiggy clusters on the tips of its branches after seeding. The swollen stems taste just like dried raisins.

"Tony had a passion for unusual fruit trees," says Wilfred. "We've also got a Chinese cork tree that came from New Zealand plantsman, Peter Cave."

Wilfred also explains about the farm's Indian beech tree (also known as *Pongan* tree). It is closely related to the pea family, and the thick taproots are nitrogen fixers in the soil.

The property is bordered on one side by the Quarter Acre Café and the Waiuti Stream which contains 30 to 40 eels (some very large!). It's a pretty spot with lines of elder trees planted through flowering wild garlic. There's also a group of horse chestnuts "alternating pink and white, which has conkers." Sam says it is a popular place for wedding photos.

Although much of the planting has been undertaken by the previous owners, Sam is responsible for the 110 olive trees, including varieties, Koroneiko, Frantoio, Pendolino and Leccino, which produced a total of 800 kilos of oil last season.

Access to the olive grove is through an arbour covered in the white rambling rose, *Wedding Day*. Wilfred is in the process of pruning this giant (those of you who have grown this rampant grower will know what a job he's got).

Later we walk down the drive, past the graceful camellia *Tsai* with her tiny, white, single flowers, towards the highway, where a

man-made lake is surrounded by flowering cherries, and loads of acacias, just finishing flowering. Sam explains this area is prone to flooding, the last significant flood only last year.

Before I go I take a last wander past the bed of violets, huge-flowered, sweet-scented. "They're Ōtaki Violets," says Wilfred. "From Watson's Gardens."

Jennings Farm is available for garden walks and tours, and as a wedding venue (no dates are available 2016/summer 2017). For further information contact 06 3626556 or [events@jenningsfarm.co.nz](mailto:events@jenningsfarm.co.nz)





# Gardening with

## Focus on growing kumara

This ever-popular sweet potato (*Ipomoea batatas*) originates from South America, but is known in New Zealand as kumara, their Maori name. One of the healthiest vegetables you can eat, (low in sodium, and virtually fat and cholesterol-free) it is loaded with more fibre than oatmeal, and provides essential nutrients such as vitamin B6, calcium, and iron.

Varieties include the firm textured, mellow-tasting red, and the slightly sweeter, soft-textured gold. The orange variety is firm and tastes the sweetest.

You can start sprouting kumara shoots in late winter or early spring – select well-shaped, undamaged and disease-free tubers. Use a polystyrene or plastic box with drainage holes and a clear plastic or glass lid, and line the bottom with 10cm of horse or pig manure that is just starting to rot. Cover with a layer of straw and top off with a few centimetres of sand. Push a couple of kumara tubers into the sand, then water and cover. Keep the seed bed well watered.



won't thrive in cold wet soils, or where they are exposed to cold winds.

Plant in free draining, loose soil, preferably one that has a hard pan about a foot below surface – if you don't, bury something like corrugated iron under the soil to act as a hard pan substitute. If your soil is too heavy the skins will be covered in a patchy brown virus, and if there's no hard pan and your soil is fertile, the tops will go for miles – and you'll get no kumara!

Blend in a balanced fertiliser, but don't be tempted to fertilise while plants are growing – you'll encourage leaf growth as opposed to tuber growth.

It's a good idea to mound up soil (about 20cm) before planting out in spring (wait till all threat of frost has passed). Plant 10cm deep, 40cm apart, and bend roots of cuttings under, into a J shape, so roots face up to the top again under the ridge of soil – this will prevent vines from spreading too far.

As vines grow the stems will try to put down new roots where they touch soil, so lift foliage regularly

to encourage tuber growth, not leaf growth.

Don't plant kumara in the same spot twice, but they will grow successfully in containers (they'll need to be at least 30cm deep). They'll require plenty of water through summer to ensure good-sized tubers.

Harvest kumara in 105-120 days, once leaves start to die down or turn yellow in autumn. Dig up and leave on top of soil to dry for a few days before storing – they can be stored in a cool, dry place for up to 5 months.

As the manure heats up your kumara will sprout vigorously. Lift the lid to allow for air circulation, and to prevent mildew and fungal problems. Sprouts can be cut off the tuber when they're about 5cm high and roots can be easily separated – this will take approximately 4-8 weeks.

Kumara are sun lovers, the hotter and sunnier the weather the happier they are. They require a long, warm, growing season – at least five frost-free months, and both days and nights must be fairly warm. This sub-tropical vegetable

## Garden tasks for September

### Flower garden

Complete pruning of fuchsias, hydrangeas, hibiscus and other flowering shrubs by removing diseased, dead or damaged branches – try to get this finished before any vigorous spring growth.

Continue planting dahlia tubers and gladioli corms for a colourful summer display.

Divide and replant primroses and polyanthus after flowering.

Feed flowering spring bulbs with a side dressing of bulb food to ensure growth and the development of flowering spikes for the next season.

Hemerocallis or day lilies can also be planted now. These come in a variety of forms and colour – they're a delight in the summer garden with their cheery flowers and attractive foliage.

Feed and mulch roses, trees, shrubs and flower beds.

Plant out new perennials like lavender, agapanthus, canna lilies, fuchsias and geraniums.

Sow your favourite summer flower seeds – alyssum, wallflower, cosmos, celosia, dahlia, gazania, gerbera, impatiens, petunia, viscaria, begonia and Californian poppy.

Plant out summer seedlings of spring and summer flowering annuals – calendula, hollyhock, pansies, polyanthus, marigold, chrysanthemum, delphinium and cornflower.

### Fruit and vegetable garden

Prune passionfruit vines and feijoas to encourage new growth and fruiting.

Plant out strawberries, blueberries, brambles and rhubarb.

Spray stone fruit trees with copper and bug oil spray to protect from leaf curl disease and prevent brown rot.

Continue planting early-crop potatoes after sprouting – remember potatoes can also be grown successfully in a tyre or large plastic bag filled with good quality garden mix.

Complete your vegetable garden preparation by digging in plenty of compost.

Sow veggie seeds of carrots, beetroot, silverbeet and peas directly into the garden. Sow lettuces, leeks, cabbage, tomato, capsicum, courgette, eggplant and cucumber into trays of seed raising mix ready for transplanting later.

You can transplant summer vegetable seedlings into the garden, lettuce, cabbage, leeks, onions and silverbeet.

### Lawns

Now is the perfect time to sow new lawns.

Feed existing lawns with lawn fertiliser – make sure you water in well.

Spray for Onehunga weed and broadleaf weeds with a turf or prickle weed killer – be prickle free this summer.

### Second thoughts

It's easy, at this time of the year when water seems to be everywhere, to forget that in some areas of your garden plants may slowly be expiring from lack of water. Under a hungry and overhanging hedge, plants can become too dry, so attention to individual water needs is important at this time of vigorous growth. Pot plants are also easy to overlook – as many of them reawaken to new growth, their need for water and fertiliser increases.

**Watson's Garden Ltd**

Don Watson's wonderful Cyclamen

Daphne

Bedding plants	<b>17 Bell Street</b>	Open
Petunias	<b>Otaki</b>	Monday-Saturday
Pansies	<b>(06) 364 8758</b>	9am - 5pm
Dianthus		Closed Sundays &
Lobelia		public holidays
Potted colour	watsonsgarden.co.nz	

**Pieris Temple Bells**

A special shrub for the border with its large drooping clusters of white bell shaped flowers. Flowers in spring and followed by red leaves and stems which mature to bronze then dark green.

Medium size, hardy, compact and slow growing. Lovely in mass.

**Pittosporum Cornifolium**

Rare & threatened from the Poor Knights islands. A small elegant shrub, open habit, grows to 2m, great for well drained soil. With dark green leaves, yellow flowers and a sweet scent.

it's an excellent addition to a sunny or part shaded spot.

**TE HORO GARDEN CENTRE**  
**Main Highway & Te Horo Beach Rd**  
**TE HORO**  
 ph 364 2142  
 we have some treasures for you ....



# the Ōtaki Mail

BY VIVIENNE BAILEY  
viv.bailey@xtra.co.nz

## Japanese flowering quince

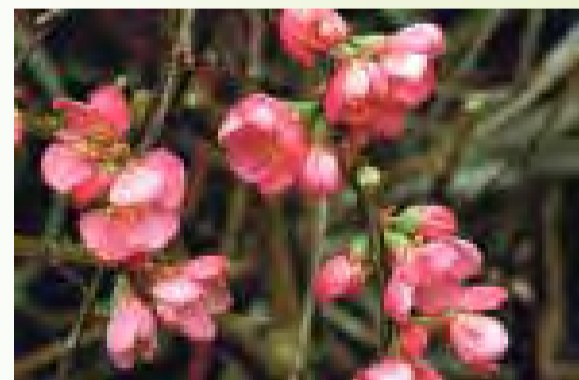
In late winter or early spring the bare branches of Chaenomeles, the Japanese flowering quince, break into a riot of spectacular colour. They're among the first spring shrubs to bloom – buds may even start to show colour as early as June.

Picturesque and practically indestructible, their bare, brown twiggy branches gave the plant a strong, oriental appearance. Some grow high with a wide spread, others are compact and low, but all have spiny thorns and usually bear fruit – green and yellow japonica apples, much like small quinces, which provide winter interest in the garden. Although astringent and unpleasant to eat raw, the fruit can be used to make jelly, and to add extra flavour to apple pies.

The deciduous shrubs belong to the Rosaceae family, and are native to Eastern Asia, Japan, China and Korea. They come in a wide range of colours, from bright orange-red to white, and are hardy and easy to grow under most garden conditions. The plants prefer full sun but will tolerate dry, cold, and windy locations. Full sun is needed for the best ornamental display.

Although sparse growing (they reach a height of 1-3m) these versatile shrubs can be trained over trellis and arbour, and are excellent for espalier work against a wall or along wires. They also look great as hedges (those spiky bits keep the cats away), in mass plantings, shrub borders, cottage gardens and pots.

The Chaenomeles x superba varieties, such as 'Pink Lady' (which has dark pink, bowl-shaped flowers) are generally more compact in their growing habit, and therefore more suitable for the general garden border.



Pink Lady

'Green Ice' has a low, spreading habit (1 x 1m) and produces white-tinged, semi-double, green blossom from chartreuse buds,



Green Ice

while 'Cameo' has soft apricot-pink, double flowers, delicately shaded and borne in profusion on a compact, bushy shrub (1.2x1m).



Cameo

'Cardinal' is a strong, vigorous grower (2 x 1.5m) with large, brilliant, deep-red, single blossoms over a long, profuse flowering period.

'Sunset Gold' (2 x 1.5m) produces single, rose-pink flowers which completely cover every branch – it also bears fruit heavily.



Toyo Nishiki

For a delightful novelty you could try 'Toyo Nishiki' (2 x 1.5m), which comes with single white, pink and rose flowers on the same bush – great for floral work.

To preserve the shape and vigour of your shrub, you can prune virtually at any time, perhaps best when the pretty, flowering stems can be picked and taken indoors.



even honey bees love Quince blossoms



the flowering Quince is a big versatile shrub

## Talisman Nursery

*Specialists in Native Plants*



If you are looking for a plant that will tolerate coastal conditions, harsh wind and poor soil.....*Brachyglottis greyi* might be the answer. Found naturally on sea cliffs on the Wairarapa coastline they have silver-grey foliage and masses of bright yellow flowers in summer.

**135 Ringawhati Road, Otaki**  
**OPEN 1 - 4pm Tue - Thu**  
**10am - 4pm Fri & Sat**  
**ph: 06-364-5893**  
**www.talismanplants.weebly.com**

# ŌTAKI UPDATE

## Ōtaki in Ākina Te Reo videos

Ōtaki residents have been featured in a digital campaign Council is running to encourage people to have a go at Te Reo Māori.



Making a Te Reo ad in Ōtaki District.

Ōtaki residents have been featured in a digital campaign Council is running to encourage people to have a go at Te Reo Māori.

The video will be shown throughout the year and will be available on the Council's website.

The video will be shown throughout the year and will be available on the Council's website.

The video will be shown throughout the year and will be available on the Council's website.

The video will be shown throughout the year and will be available on the Council's website.

The video will be shown throughout the year and will be available on the Council's website.

The video will be shown throughout the year and will be available on the Council's website.

The video will be shown throughout the year and will be available on the Council's website.

- to improve the quality of our services
- to improve the quality of our services
- to improve the quality of our services
- to improve the quality of our services
- to improve the quality of our services

**Sign up for our e-newsletters!**

Want to be kept up-to-date about Council activities and events, items to remember, opportunities to get involved and how you can give feedback? Sign up now at [kapiti.coast.gov.nz/Newsletters](http://kapiti.coast.gov.nz/Newsletters) for weekly e-mails delivered direct to your inbox.

## Share your memories of Ōtaki



1911-14, Ōtaki in 1914

Would you like to share your memories of Ōtaki or find out more about the town's history - now and then?

Come along to "Memories on Monday" at Ōtaki Library on Monday 7 September from 10.30am-12pm.

Part of Heritage Month, this event will feature a small group of long-time residents who will talk about how Ōtaki has changed and the people they remember. Members of the Ōtaki Genealogy Society, based at the library, will also be at the session to offer their perspective.

"We encourage anyone to share memories by bringing photos along to follow discussion," Heritage & Māori Cultural Area Coordinator, Trish Crockett, says. "Or if people just want to listen in to the conversation, that's fine too!"

Photos from the library's heritage collection will also be shared, plus you'll get the chance to meet our own historians in the Māori and Heritage area who will be at the session.

Another event for Heritage Month takes place later in the week (Wednesday 7 September, Pungarehu Library meeting room, 10.30am-12pm) with local historian Audrey Downer talking about the U.S. military camps which were set up on the Kapiti Coast during World War II.

# Ōtaki College News

August 2016

www.otakicollege.school.nz



## From the principal

### “Be the change that you wish to see in the world”, Mahatma Gandhi

Term 3 is undoubtedly the time of most concentrated effort for Ōtaki College learners, both inside and outside the classroom. The beginning of the term sees the most seriously challenging of the Outdoor Education trips – with the Year 12 students spending five days at Mt Ruapehu snow caving and learning about the local environment and the Year 13s learning to lead climb. In addition to this, our Year 13 Physical Education class worked hard over a period of six weeks to train for the annual Tough Guy and Gal Challenge held in Wellington on Friday 5th August. The Year 12 Physical Education class also participated in this event.

Inside the classroom Seniors are, in addition to finishing many internal assessments, concentrating on the internal examinations which are crucial in preparing students for their externals and for providing NZQA with the data necessary should any students prove unable to sit an external examination due to illness. The importance of these examinations cannot be stressed enough, and we applaud all families who give their children added support during this time, which we know can be stressful, particularly for those students new to examination conditions.

The Junior programme is equally busy in Term 3, with Ignite Sport being a special focus. Ignite Sport is a leadership based programme designed to use the power of sport to engage, motivate and inspire stu-

dents to reach their full potential. Currently we have two groups, Year 11 Ambassadors and Year 10 On-track. The idea is to develop our young students and prepare them for important leadership roles later in their schooling and also as a base for future leadership.

#### Visitors to the College



We have just completed hosting **Jamie Seedhouse**, the 73rd Ōtaki Scholar to visit New Zealand. Jamie was very impressed with the welcome he received in Ōtaki and has continued to keep in contact while he is travelling around NZ. He emailed me to say:

“I really, really enjoyed my stay at Ōtaki - both your and Cassie’s hosting as well as everyone around school were extremely welcoming! If the other places on my trip are half as good I’ll have a fab time.”

This continuing relationship with Robert Gordon’s College will be strengthened through my own visit there in September when I will be meeting with RGC’s Headmaster, Simon Mills, and discussing our planned 100 year commemoration of the sinking of the SS Ōtaki. This will be a major event in Aberdeen and is likely to become not only a local event for Ōtaki, but a national event for New Zealand as it will be one of the only commemoration services that recognise the contribution made by mercantile marines in WW1 in New Zealand.

**Namiki High School** have also just completed a visit with us and, like the Ōtaki Scholar, have made many comments around how welcoming our students and families are to them and how this has been a highlight of their visit to New Zealand.

On 10th August the College was fortunate to receive a visit from NZ Tall Black and NZ Breakers player, **Alex Pledger**. Alex was visiting as part of the Kāpiti Kids Motivational Trust. Alex spoke to the Year 7 and 8s, as well as a number of students from our Basketball teams. Alex was inspiring and spoke about his childhood and how he became involved in Basketball. Alex encouraged our students to never give up on their dreams as you never know where they will take you.

The College recently also had the opportunity to host **Reggie Dabbs**, who is considered by many in the world to be one of the

best youth focussed motivational speakers. He speaks on average to approximately 1.5 million young people a year. His presentation was a mixture of humour, music and messages of empowerment. Our students were captivated for 30 minutes and he left a lasting impression on all who attended.



Outdoor Education students exploring Whakapapa with ‘The Pinnacles’ in the background

During this busy time we have hosted members of the **Education Review Team** as they have undertaken a full review of the College. This process has been welcomed by us as it enables an external lens to be put on the College. We are happy to be able to say that in their verbal report the reviewers were very encouraging around the direction, management and teaching and learning that is taking place in the College. We look forward to the full written report, which will be shared with our community as soon as it is completed by the review team.

## Ōtaki Netsafe Workshop

The Ōtaki community showed their support for responsible digital citizenship at the Netsafe workshop hosted by Te Reanga Ipurangi Ōtaki Education Trust at the Memorial hall supper room, August 16th.

Lee Chisholm, a netsafe NZ national educator, flew down from Auckland at the invitation of the trust and Ōtaki schools to present two workshops.

Netsafe is an independent non-profit organisation with a focus on online safety and security. It’s purpose is to enable New Zealand internet users to confidently access digital opportunities and prevent online harm.

Sixty teachers attended the first workshop to discuss responsible digital citizenship and safe online practices. They shared their concerns about online safety for their students, these included social media bullying, privacy breaches and inappropriate content, the workshop also looked at the Harmful Digital Communications act which came into effect last year.

The workshops looked at the attributes netsafe have identified for being

- A responsible digital citizen ..
- is a **confident** and **capable** user of ICT
- uses technologies to **participate** in educational, cultural & economic activities
- uses and develops critical **thinking** skills in cyberspace
- is literate in the **language, symbols and text** of digital technologies
- is aware of ICT challenges and can **manage** them effectively
- uses ICT to **relate** to others in positive, meaningful ways
- demonstrates honesty and **integrity** and ethical behaviour in their use of ICT
- **respects** the concepts of privacy and freedom of speech in a digital world
- **contributes** and actively promotes the values of digital citizenship netsafe

The 20 whānau that attended the evening workshop also outlined their concerns for their children online, these included pressure to conform, cyberbullying, time management and social media monitoring.

Lee Chisholm provided some sound advice and explained that a good digital citizen is basically the same as a good citizen, she gave parents the following advice.

1. Create rules around device use, time management and behaviour as soon as your child starts using devices.
2. Collaborate with your child to solve issues without overreacting.
3. Teach your child empathy and build mutual trust.
4. Help your child be an upstander, not a bystander.
5. Discuss the guidelines around responsible digital use regularly.
6. Make sure your children talk to someone, even if it is not you.
7. Help children and young people understand the line between funny and cruel.
8. Make your child aware of the permanent nature of the internet and their digital tattoo.

If you would like more information look at these websites;

- [www.netsafe.org.nz](http://www.netsafe.org.nz)
- [www.digitalparenting.org.nz](http://www.digitalparenting.org.nz)
- [www.cyberbullying.org.nz](http://www.cyberbullying.org.nz)

You can also contact; Dale Nakhla, Whānau coordinator Te Reanga Ipurangi Ōtaki Education Trust [dale@tmok.org.nz](mailto:dale@tmok.org.nz)



an attentive audience heard about safety on the net

Ōtaki College is inviting interest in the **Student and Adult Workshop Club**.

This club will be run at the College workshops on Tuesday nights 7 - 9pm each week. The purpose of this club is for students to share a workshop experience with their family, to go on a journey together, making something useful for your home.

This is for novice through to expert, with technical and creative support from the teaching staff to help with the machines, tools, processes and materials to make an item of your choice.

Projects could be coffee tables, clocks, lamps, games, garden sculpture, table furniture or many other bright ideas.

Processes may include: welding, plasma cutting, wood construction, metal and wood lathe work.

There will be a small cost for the use of the college facilities and a material cost based on projects selected and material bought in by members.

There will be limited places per workshop evening. If there is sufficient demand we may offer a second workshop evening later in the week.

To explore ideas and see if this is a good fit for your family, please contact Marcus Thompson ([mtp@otakicollege.school.nz](mailto:mtp@otakicollege.school.nz)) or Chris Georgetti ([cgt@otakicollege.school.nz](mailto:cgt@otakicollege.school.nz)) via phone (364 8204) or email at Ōtaki College

## Gloria Johnston’s eightieth

BY ATHOL CORBETT

Gloria celebrated her 80th birthday with family & friends from all over Australasia.

Gloria arrived with husband Douglas and four children in 1967. Douglas was principal teacher at Ōtaki Health Camp. He died in 1981.



Gloria was midwife at Ōtaki Maternity hospital, Principal Nurse for 15 years. The hospital closed in the 1990s. She was a foundation member of the Ōtaki Women’s Health group.

Over 60 friends and family celebrated her birthday at Cottage Motel’s conference centre.

**KAPITI COAST DISTRICT COUNCIL****NOTICE OF ELECTION FOR THE KAPITI COAST DISTRICT ELECTIONS**

I hereby give notice, under Section 65 of the Local Electoral Act 2001, that the 2016 local authority elections for Kapiti Coast District will be held on Saturday 8 October 2016 and that the elections will be held under the Single Transferable Voting (STV) electoral system by postal vote. The following persons have been duly nominated as candidates for the election of:

MAYOR (1), KAPITI COAST DISTRICT  
COUNCILLORS (10), KAPITI COAST DISTRICT  
MEMBERS (4), PĀEKĀKĀRIKI COMMUNITY BOARD  
MEMBERS (4), PARAPARAUMU-RAUMATI COMMUNITY BOARD  
MEMBERS (4), WAIKANAE COMMUNITY BOARD  
MEMBERS (4), ŌTAKI COMMUNITY BOARD

**MAYOR OF KAPITI COAST DISTRICT** (One [1] candidate to be elected)

NAME	AFFILIATION
BUSWELL, Angela	-
CHURCH, Ross	-
ELLIOTT, Jackie	INDEPENDENT
GURUNATHAN, K (Guru)	-
SCOTT, David	-
WELSH, Gavin	-

**COUNCILLORS OF KAPITI COAST DISTRICT**

(Ten [10] Councillors to be elected in total)

**DISTRICT-WIDE COUNCILLORS** (Five [5] Councillors to be elected)

NAME	AFFILIATION
AUSTIN, Ric	INDEPENDENT
BELL, Murray	INDEPENDENT
BOONEN, Emily	-
BUSWELL, Angela	-
CARDIFF, Mike	-
ELLIOTT, Jackie	INDEPENDENT
ELLIS, Peter	-
ELLISON, Ann-Maree	-
GREGORY, Eric	-
GURUNATHAN, K (Guru)	-
HOWSON, John	-
RUTHE, Christopher	INDEPENDENT
SCOTT, David	-
WARWICK, Shelly	-

I hereby give notice, under Section 63 of the Local Electoral Act 2001, that the following candidate has been duly nominated for office as Councillor for **ŌTAKI WARD**.

**ŌTAKI WARD COUNCILLOR** (One [1] Councillor to be elected)

NAME	AFFILIATION
COOTES, James	-

As the number of candidates did not exceed the number of vacancies to be filled for the **ŌTAKI WARD**, I hereby declare pursuant to Section 63(2) of the Local Electoral Act 2001, the said **James COOTES** to be duly elected unopposed as Councillor for **ŌTAKI WARD**.

**WAIKANAE WARD COUNCILLOR** (One [1] Councillor to be elected)

NAME	AFFILIATION
CHURCHMAN, Geoffrey	INDEPENDENT
McCLOY, Iride	-
PARRY, Tim	-
SCOTT, Michael	INDEPENDENT

**PARAPARAUMU WARD COUNCILLORS**

(Two [2] Councillors to be elected)

NAME	AFFILIATION
BENTON, Mark	-
HALLIDAY, Martin	INDEPENDENT
RANDALL, Bernie	-
SPIERS, Kathy	-
VINING, Fiona	-

**PĀEKĀKĀRIKI-RAUMATI WARD COUNCILLOR**

(One [1] Councillor to be elected)

NAME	AFFILIATION
BURNS, Guy	-
HOLBOROW, Janet	-

I hereby give notice, under Section 63 of the Local Electoral Act 2001, that the following candidates have been duly nominated for office as a member of the **ŌTAKI COMMUNITY BOARD**.

**ŌTAKI COMMUNITY BOARD** (Four [4] Members to be elected)

NAME	AFFILIATION
BEVAN, Kerry	-
PAPPS, Christine	-
STEVENS, Marilyn	-
WARWICK, Shelly	-

As the number of candidates did not exceed the number of vacancies to be filled for the Ōtaki Community Board, I hereby declare pursuant to Section 63(2) of the Local Electoral Act 2001, the said **Kerry BEVAN, Christine PAPPS, Marilyn STEVENS** and **Shelly WARWICK** to be duly elected unopposed as Members of the Ōtaki Community Board.

**WAIKANAE COMMUNITY BOARD** (Four [4] Members to be elected)

NAME	AFFILIATION
AITKEN, Louise	-
BEGOVICH, Tonchi	INDEPENDENT
GREGORY, Eric	-
LLOYD, Jill	INDEPENDENT
PRVANOV, Jocelyn	-
ROIL, David	-
SEAMARK, Jeremy	-
STEVENSON-WRIGHT, Margaret	-
WESTBURY, James	-

**PARAPARAUMU-RAUMATI COMMUNITY BOARD**

(Four [4] Members to be elected)

NAME	AFFILIATION
BEST, Jonny	-
BURNS, Guy	-
RANDALL, Bernie	-
SCOTT, David	-
SPIERS, Kathy	-
VINING, Fiona	-

I hereby give notice, under Section 63 of the Local Electoral Act 2001, that the following candidates have been duly nominated for office as a member of the **PĀEKĀKĀRIKI COMMUNITY BOARD**.

**PĀEKĀKĀRIKI COMMUNITY BOARD** (Four [4] Members to be elected)

NAME	AFFILIATION
ECKETT, Steve	-
EDWARDS, Philip	-
EWENS, Holly Jane	-
HUGHES, Paul	-

As the number of candidates did not exceed the number of vacancies to be filled for the PĀEKĀKĀRIKI COMMUNITY BOARD, I hereby declare pursuant to Section 63(2) of the Local Electoral Act 2001, the said **Steve ECKETT, Philip EDWARDS, Holly Jane EWENS** and **Paul HUGHES** to be duly elected unopposed as Members of the Paekākāriki Community Board.

There being in the majority of cases more candidates than there are vacancies to be filled, elections will be held between the said candidates conducted over the period commencing 8.00 am on Friday 16 September 2016 and closing at 12 noon on Saturday 8 October 2016. Voting documents will be forwarded to electors between Friday 16 September and not later than Wednesday 21 September 2016. Voting documents must be returned by post or delivered to the Electoral Officer not later than **12 noon on Saturday 8 October 2016**.

**Early Processing of Votes**

Returned Voting Papers will be processed throughout the three week voting period.

**Enrolment**

Persons who are not on the electoral roll may apply to enrol, either as a residential elector or a ratepayer elector, not later than close of business **Friday 7 October 2016**.

Applications for registration as a residential elector must be forwarded to the Registrar of Electors, by close of business on **Friday 7 October 2016**. This can be done at any New Zealand Post Shop.

Applications for registration as a ratepayer elector are to be in the form prescribed by the Local Electoral Regulations 2001 and must be in the hands of the Electoral Officer, Kapiti Coast District Council by 5.00pm on **Friday 7 October 2016**.

Electors who enrol during this period may apply to the Electoral Officer for a special vote. A polling booth will be open at the Paraparaumu Library for the issue of special votes from **Friday 16 September to Friday 7 October 2016** inclusive, between the hours of **9.00 am and 5.00 pm weekdays and 10.00 am to 4.00 pm Saturday 24 September and Saturday 1 October, 10.00 am to 2.00 pm Sunday 25 September and Sunday 2 October**. On Election Day, **Saturday 8 October 2016**, special votes will be available at the Paraparaumu Library between **9.00 am to 12 noon**.

For further information regarding special voting please contact the Electoral Officer Jude Wadsworth or the Deputy Electoral Officer Vyvien Starbuck-Maffey on (04) 296 4700 or 0800 486 486.

Dated at Kapiti Coast District this 15th day of August 2016.

**Jude Wadsworth**  
Electoral Officer Kapiti Coast District Council  
175 Rimu Road Paraparaumu

# Focus on Vicki Black and the new Ōtaki RSA - Your Community Club

BY LLOYD CHAPMAN



The RSA respects and remembers ANZAC Day and the Gallipoli spirit that founded the organisation over a century ago. But in 2016, the committee of the Ōtaki club came to the realisation that they needed to acknowledge the passage of time, to take stock of their assets and embrace the future.

The manager's resignation left a void, and after consideration, the committee embarked on a recruitment drive to find a new business manager. Vicki Black, after a decade working behind the scenes at New World was looking for a new career challenge, so after interviews and due diligence, she is now the business manager of Ōtaki RSA - your community club.

Vicki Black grew up in Wellington, and as a Girl Guide achieved the Queens Guide award and was later selected for a Lions Youth Leadership course. On leaving school she completed a Marketing degree at Massey University, and served as a Territorial with Signals at Linton. After uni, she spent a year with the BNZ in their marketing department, before being seduced away to join an advertising agency as an account manager. These were the Muldoon years of long lunches, big expense accounts working six and sometimes seven days a week, under pressure to perform.

Then Vicki decided that it was time for her OE, before the British age limit of 28 restricted options for a working holiday. After the mandatory kiwi 'working in a pub' initiation, Vicki found herself back working in an advertising agency. Six years later, ready for a change she accepted a job with a Covent Garden bookstore, as their assistant book buyer. Promotion followed, and before she left, sales had rocketed.

Tired of London, Vicki moved to Lymington, a small tourist town in Dorset on the edge of the New Forest, looking out onto the Isle of Wight. There, with her partner she developed a business, which she ran successfully for a decade. Eventually the lure of 'home' was too much, and after eighteen years Vicki returned to New Zealand, and her mum in Aotaki street. After stacking shelves at New World for six months, Vicki was persuaded to move into the office, to take charge of admin and HR for Mark and Jackie Kennedy. That was ten years ago.

Vicki Black was looking for a new challenge when the position became vacant at the RSA. Initially she was uncertain about the RSA opportunity, but when the new committee's plan was put to her, she accepted the challenge to move the RSA into the 21st century and develop it as a club, proud of its heritage and central to the social life of Ōtaki.

### First an inventory

- It's a big comprehensive premises that can hold up to 200 people.
- good kitchen & attractive restaurant
- modern well-equipped bar
- big dance floor that can double as a indoor bowls venue
- six quality full-size snooker tables
- pokie machines
- a TAB agency
- a warm, friendly safe place to socialise
- a courtesy coach to collect and deliver patrons home for a gold coin donation

### And then a plan

- To develop the RSA community club as a welcoming place to meet friends for a social drink or an enjoyable meal, or just a chat.
- To develop the restaurant as 'the best place to eat in Ōtaki'
- To increase patronage: join now and full membership is only \$25 to 31st January 2017

In October, Vicki Black is returning to Nepal, where she went trekking with World Vision in 2010. She's adopted the village of Prapcha, population 1,400. Fewer than half the people can read & write, nobody can speak English. Nearly 300 buildings were damaged or destroyed in the earthquakes 18 months ago. So far Vicki has raised \$10,000 for her village, and you'll find a donation box at the RSA if you'd care to participate in helping a Nepalese village.



Formal welcome to Prapcha Village in October 2014

Once upon a time, the RSA was the Returned Services Association, where war veterans sought fellowship.

But the last great war was over 71 years ago, and most who participated are no longer with us.

## The Korowai

BY MARGARET ANDREWS

The korowai, (cloak) worn by the Robert Gordon's College Ōtaki Scholar, when he first arrives in New Zealand and Ōtaki College's Sander Scholar, when they travel to Scotland, was commissioned and the work undertaken by Ōtaki craftswoman, Elaine Bevan.

"Working the two colleges together unites us as one, our katahitanga," Principal Andy Fraser said.

The band across the top of the korowai has been worked in blue and gold, the colours of Ōtaki College, the crest of Ōtaki College is woven into the left front and the flag of Scotland on the righthand side. Beside the crest and flag are woven the Royal New Zealand Navy, *Matauranga - Staircase to Heaven or Stairway to Education*. Bringing both ends together is a "zigzag" design - the pathway between the two colleges. The cords tying the front of korowai are working in the colours of both Ōtaki and Robert Gordon's colleges and these combined colours are in the thread "tassels" down both fronts.

"When the cords are drawn together and tied, they bring together the students of Ōtaki College and Robert Gordon's College," Mr Fraser said.

In the body of the korowai is Te Ara - the pathway or link to the oceans. The black specks (tassels) are set in the potama pattern, representing the students of the two colleges and they have coloured threads in the colleges' colours mingled among the dark colours.

Jamie Seedhouse proudly wears the Korowai on Page 6

**Ōtaki RSA Your Community Club**

Come and enjoy our warm, friendly, safe Club - bring a friend, play cards, bowls, have a chat, or just a quiet read.  
Available whenever the Club is open: TAB, Pokies, Book exchange, Sky TV, Indoor Bowls, Snooker, dance floor  
bar selling beers, wine, cider etc (members only),  
soft drinks and tea and coffee.

**Upcoming events**  
Friday 2<sup>nd</sup> Sept - The ever popular Andrew London Trio return playing swing music. Come and have a dance!

Saturday Sept 17<sup>th</sup> - The International Manri Volcanics Showband returns for another exciting performance. Tickets only \$20. On sale now. Pre-show dinner available 5 - 6.30pm. Bookings essential. Everyone welcome. Courtesy coach available for \$2 donation.

Check your member emails or the calendar and Club notice boards for details of even more entertainment on Friday and Saturday nights throughout the month.

**Regular events**  
The Club opens at 11am every day except Monday, Club opens 2pm

**Tuesdays** Raffles and membership draw between 5.30 & 7.30pm. Courtesy coach available for \$2 donation. Indoor bowls 7-9pm

**Thursdays** House 10am - 12pm  
Happy hour 5-6pm. Raffles. Snooker & Darts from 6.30pm

**Fridays** Raffles and membership draw between 5.30 and 7.30pm. Courtesy coach available for \$2 donation.

**Saturdays** Pint & Posters Club with happy hour, raffles, nibbles & fun. TAB Club draw at 6pm. Minimum prize \$5,000 to a NZ Club member

Poppies Family Restaurant is open Tuesday nights for members and invited guests. \$10 meals.  
Friday and Saturday Poppies is open to everyone from 5pm.  
Check the members email or Club noticeboards to see the Chef specials.  
A la carte and carvery available both nights.  
Perfect for a family celebration or get-together with friends.  
Everyone welcome for Sunday lunch at Poppies, only \$12.50. Enjoy a great roast meal with friends or family and make Sunday special again.

For further information call Vicki on 364 6221

## Ōtaki at War

The RSA Community Club, in conjunction with Errol Maffey is holding a film evening depicting Ōtaki people who played a part in wars over the last century.

- World War I** The story of Rikihana-Carkeek, as told by grandson Mickey Carkeek.
- World war II** John Martin tells his story of the cleanup in Crete  
Becky Spooner tells her 'secret squirrel' stories as a radio operator  
The Burns brothers - naval stories
- Korea** Bob Hammond talks about Korea and the monument at Ōtaki school
- Vietnam** John Taylor talks about delivering mail to American soldiers
- Bosnia** Tim Richards and peacekeeping

Ōtaki RSA Presents  
**Ōtaki at War**

**Fundraising Film Evening**  
**Sunday 16th October**  
**Ōtaki R.S.A.**  
**Pre Show**  
Bar meals available from  
5.30pm **\$10**  
**Screening at 7.00pm \$10**

Tickets available Ōtaki R.S.A.

All Proceeds go to the Ōtaki Community Patrol

## Media Muse

A light-hearted look at the media, by Manakau's gnarled commentator Tom Frewen

You know you're in Ōtaki when you see a sign saying "Ōtaki - last stop for guns and ammo before Levin". And you know you're in Levin when you see a sign saying "Levin - Look Out! You're standing in it!"

If you were in Levin on the first Wednesday of this month and happened to drop in on the monthly meeting of the Horowhenua District Council you would have witnessed an extraordinary event. You would have seen the mayor, Brendan Duffy, leading his ten councillors in a standing ovation for their chief executive, David Clapperton.

Described in the minutes of the meeting as "unprecedented", the standing ovation followed the chief executive's "PowerPoint presentation covering the highlights of the 2015/2016 financial year which included details on Council's strong financial performance, the various projects and initiatives undertaken by Council departments, and significant staff achievements, all of which contributed to a very successful year."

Anything that is unprecedented is, by definition, newsworthy. If you weren't there to see it for yourself, you would have expected to read about in at least one of the two local papers published later that week.

You'd have been disappointed. The Horowhenua Mail, published the next day, made no mention of the meeting. Nor was there anything in the Horowhenua Chronicle on

Friday. The "Kronk", though, did run a statement from Mayor Duffy "challenging" locals to nominate each other for the 2017 New Zealander of the Year awards.

"One of the best things about my job is meeting the many fine citizens doing wonderful things for the community. These are real people whose selflessness and everyday acts of kindness make Horowhenua and indeed New Zealand great places to live in," said Mr Duffy who is running for a fifth term as district mayor.

"I can think of no better way to honour the best of Horowhenua than by nominating someone for New Zealander of the Year," he said.

A virtually identical item with strikingly similar wording praising the selflessness and kindness of voters, er, local people appeared in the Horowhenua Mail the following Thursday.

Two potential nominees spring immediately to mind: Joann Ransom, Levin's long-serving and much-loved former chief librarian, and Cherie Taylor, former editor of the Horowhenua Chronicle.

Jo Ransom was the chief executive of the Te Takere Trust which administered the district's libraries including the popular and successful community centre created from the shell of the old Countdown supermarket. She had an international reputation for

her role in developing the Koha free software, now used in the running of libraries around the world.

Cherie Taylor had forged a new career for herself as a journalist. Raising her children on a benefit, she decided to go for a formal qualification from a polytechnic and get some work experience.

"We make our own destiny, and it begins with that seed of hope," she wrote in her Totally Taylor column in the Kronk's January 13 issue this year. "You just need to start that ball rolling and remain determined to reach that goal."

Unfortunately for Cherie, her ball rolled into the editor's office at the Horowhenua Chronicle, a once-vigorous and thriving local newspaper reduced to a sad twice-a-week giveaway under its Australian owners. NZME, formerly Wilson and Horton, also publish the New Zealand Herald and are hoping to merge with the other Australian-owned newspaper chain, Fairfax, which owns the Horowhenua Mail.

Together, the two Australian media companies own almost all the country's newspapers and have drastically cut the numbers of local reporters to reduce costs and maximise profits for their shareholders and executives. In their offices in Auckland and Sydney they have no concern about threats to democracy and potential for corruption

and incompetence from not having reporters keeping an eye on local mayors and councillors.

Neither the Mail nor the Kronk sent a reporter to cover the August meeting of the Horowhenua District Council. Cherie Taylor used to attend the meetings. She's disappeared, her departure neither reported or acknowledged by her own paper.

Also gone in mysterious circumstances, Jo Ransom has resigned as Te Takere's chief executive. Her departure appears to have been the main purpose of getting rid of the trust that ran the libraries.

Apart from publishing letters from a few concerned individuals, neither newspaper has shown any interest in investigating how or why the council overturned its Long Term Plan to take over the administration of Te Takere itself. Requests under the Official Information Act seeking explanations and a record of how and when the council made the decision have been unsuccessful.

The chief executive, David Clapperton, insists the decision was his and his alone. Had a local reporter been at the meeting to witness Brendan Duffy and his councillors stand to applaud Mr Clapperton, voters might have learned whether their elected representatives were merely expressing their gratitude for having their unelected chief executive do their job for them.

## BLENDING A BOUNTIFUL CROP OF OLIVE OIL

BY HELEN WALSHAW

It's the culmination of a year's work on the Kapiti Olives Ltd olive grove on the banks of the Ōtaki River and the "excitement / trepidation" of receiving the new season's oil back from pressing is palpable.

Excitement because we're looking forward to fresh, vibrant olive oil to sell and trepidation (even after 12 years) because you hope it's without defects, and so can be certified as "true" extra virgin olive oil with its health-giving properties and correct taste, and better still, great tasting so that medals can be sought and won in the NZ Olive Awards.

Undoing the 1,000 Litre foil bags gives us that first green, fresh, and grassy "whiff" which is all good. Phew! Our noses tell us a lot about the oil. The aroma should be pleasant, enticing and associated with familiar smells such as fruits, grass, salad leaves, herbs and fresh nuts.

Samples of each of our five different oils are drawn off and tasted and ranked on a matrix chart which starts with the Aroma followed by the Flavour and then the overall Complexity and Persistence of the oil.

Fresh new oils tend to be at their highest flavour level and the dominant flavour is olive fruitiness plus flavours reminiscent of other foods like fruits, salad, herbs, grass, tomatoes, green apples and fresh nuts. Some bitterness and pungency/pepperness is sought after for a "well balanced" or harmonised olive oil.

We then start blending our five different varieties of oils to achieve two distinct olive oil profiles; one a full fruity and well harmonised oil that has become Kapiti Olive's "signature tune" olive oil.

This *Frantoio/Leccino* blend has won us medals consistently for the 12 years we've been selling commercially and is a strong part of our "premium olive oil" reputation. For those that like a more pungent finish we create a second more robust blend and this year it is our *Leccino/Picual/Koroneiki* blend. And also this year, like much of the country, we have had a bumper crop and so have enough olive oil to create a third blend which is a soft/delicate fruity olive oil.

The blending of the three olive oils is based partly on the preferred taste that we have developed and which our customers say they love and come to rely upon. And partly it's based on the quantities of each oil that we have to use. And of course mother nature plays her part, and the varieties will differ from year to year in their taste depending on the season just as grapes do.

Experimenting with blending numerous samples of each olive oil takes considerable time and becomes a little tough on the brain /taste buds trying to work out whether 10% more, or less, of a particular oil really did improve the blend in the right direction. Much water drinking and palate cleansing with slices of apple goes on between each tasting. Coming back to resample the "blends" with a fresh palate for a few days is a good double check for us and so far seems to have worked. So fingers crossed that our 12 year medal winning track record continues when the Awards take place in several week's time.

(Kapiti Olive Oil can be purchased in New World supermarkets, Moore Wilson Fresh, La Bella Italia, Penray Gardens, Waikanae Butcher, Bin Inn, Farro Fresh Foods, select delis and online at [www.kapiti-olives.com](http://www.kapiti-olives.com) or 021 239 4777)

**KĀPITI COAST DISTRICT COUNCIL**  
MEETINGS IN SEPTEMBER

Tuesday	1 September	Kapiti Island Nature Lodge Monitoring Committee	4.30 pm	Council Chambers Ground Floor, 175 Rimu Road, Paraparaumu
Tuesday	6 September	Ōtaki Community Board	7.00 pm	Gertrude Almore Supper Room, Memorial Hall, Main Street, Ōtaki
Thursday	8 September	Regulatory Management Committee	10.00 am	Council Chambers Ground Floor, 175 Rimu Road, Paraparaumu
Thursday	8 September	Property Subcommittee	2.00 pm	Council Chambers Ground Floor, 175 Rimu Road, Paraparaumu
Tuesday	13 September	Waikanae Community Board	7.30 pm	Waikanae Community Centre, Utauta Street, Waikanae
Thursday	15 September	Audit and Risk Subcommittee	10.00 am	Council Chambers Ground Floor, 175 Rimu Road, Paraparaumu
Thursday	15 September	Chief Executive Performance and Employment Committee – held in Public Excluded session	1.00 pm	Council Chambers Ground Floor, 175 Rimu Road, Paraparaumu
Thursday	20 September	Grants Allocation Committee (Districtwide Hall Hire Remissions)	9.30 am	Council Chambers Ground Floor, 175 Rimu Road, Paraparaumu
Thursday	20 September	Grants Allocation Committee (Creative Communities New Zealand)	10.00 am	Council Chambers Ground Floor, 175 Rimu Road, Paraparaumu

**Attendance at Meetings**

(1) Cancellation - Meetings are sometimes cancelled for a variety of reasons. To confirm whether a meeting is on, please ring the Democracy Services Manager on (04) 296 4700 or toll free on 0800 486 486.

(2) Venue - Please note that all meetings will be held in the Council Chambers, Civic Administration Building, 175 Rimu Road, Paraparaumu, unless otherwise specified.

(3) Public Speaking Time - Under Council's Standing Orders (Appendix 1) a period will be provided after the start of each meeting for Public Speaking Time to allow for oral submissions relating to agenda items, and at the end of meeting for other items not on the agenda. If you wish to address the Council or its Committees during Public Speaking Time please book ahead with the Democracy Services Advisor and you will be given an approximate timeslot. People who book ahead for Public Speaking will be given precedence over those who do not.

(4) Live-streaming: Council and Standing Committee meetings are live-streamed.

(5) Agendas are available two days before the meeting at:

- Our website [www.kapiticoast.govt.nz](http://www.kapiticoast.govt.nz)
- Council's Libraries and Service Centres.

Pat Dougherty  
Chief Executive

**Kāpiti Coast**  
DISTRICT COUNCIL  
He Hāro Whānau, Ko Te Hāro Whānau

PB 60601 Paraparaumu | Ph 04 296 4700 |  
Fx 04 296 4830 | [www.kapiticoast.govt.nz](http://www.kapiticoast.govt.nz)



## Ōtaki swimmers third at Wellington Winter champs

Ōtaki Pool-based swimmers for the Kapiti Swimming Club did their community and town very proud by coming home placed third overall for the percentage of members and achievement per Club at the Regional Swim Wellington Winter Championships.

This was held over two weekends Sat 6/8/16 - Sun 14/8/16 at the Kilbirnie Regional Aquatic Centre

Results:

Adejah Wharemate (9): Won 3 gold & 2 bronze  
Kaahurere McKay (10): First time, & PB  
Fallon Roy (12): 100% PB times in her 12 races  
Heremaia Cooper (12) PB times in 4 of his swims.  
Kokoro Frost (13) Won 3 bronze and 2 silver

William Moule (14): PB time in his 50m Butterfly Club Coach Yuri Taylor was very proud of all his swimmers who have trained very hard this Winter at the Ōtaki Pools. We certainly do train Champions!

You will usually find the Ōtaki-based swimming club at the Ōtaki Pools on Monday/Wednesday 5-6pm for beginners and Tuesday/Thursday and Friday 5-7pm for the intermediate and advanced squad.

We may be the Smallest Club in the Region proven to achieve the biggest results at Major Events.

Any queries please Contact Club Secretary Seuga Frost on 021 1748 789 for an assessment time or leave your name and number at the Ōtaki Pool Reception.

Back: Coach Yuri Taylor, Fallon Roy, Adejah Wharemate front: Kokoro Frost, Heremaia Cooper, Kaahurere McKay

## Maringi-a-Wai - stream restoration

BY PHILADELPHIA METE-KINGI

Maringi-a-Wai is a stream restoration project by the tamariki of Te Kura-a-Iwi o Whakatapuranga Rua Mano. This stream runs at the back of our kura and is spring fed. We started this project about a year ago.

Through riparian planting and restoring this stream to a productive and sustainable ecosystem, we will bring back birds, fish, insects and fungi.

“Tiakina nga manu, ka ora te ngahere, ka ora te ngahere, ka ora nga manu”

“Look after the birds and the forest flourishes, if the forest flourishes the birds flourish”

Man and plants have common origin. We’ve always looked at our plants as having senior status. Tane created them before mankind, they are respected as kaumatua, they are the link between man and our ancestors.

The restoration of the stream is to nurture significant biodiversity and cultural values that support important wildlife. We hope to restore a bird corridor, a traditional supermarket (kai o te ngahere), learning classroom (Wananga o te Ngahere), a medicine cabinet (Kapata Rongoa), and a spiritual domain (Wairua o te Nga-

here). Also to encourage native fish to return such as Kookopu, Koaro and Tuna (Eel). To provide cultural resources and materials for our tamariki to bring into their everyday learning experience while attending kura and to develop their comprehension and understanding of everything visible and invisible existing in the universe (Ao Maori).

We also want to incorporate our 10 maataapono into our everyday experience at Maringi-a-Wai. These maataapono or principles are used in our everyday kura work as well as out of kura activities. These 10 principles are Rangatiratanga, Whakapapa, Wairuatanga, Manaakitanga, Te Reo, Pukengatanga, Whanaungatanga, Ukaipotanga, Kaitiakitanga and Kotahitanga.

We’ve endorsed this restoration project as part of our environmental science curriculum. “The proper use of science is not to conquer nature but to live in it” Barry Commoner.

We would like to acknowledge these people and organisations for their help and support. Porrirua Trust, Rob Cross biodiversity, KCDC, Nicky Treadwell, DB Environmental Trust, Roy Winterburn, Graham Rasmussen, Ramila Parbhu and Bernie McCafferty.



Tui Barrett getting ready to go planting

As I write this my colleague is busy assembling multiple files for offences across our area. Over the last few weeks we have been putting together pieces of a puzzle to be able to arrest and charge for offences across the dishonest range and I am pleased to say we have reached a stage where those charges can be laid.



Beyond this we have several people of interest are helping us with our enquiries with more charges highly likely in the near future.

I encourage anyone with information about crime to either pop into the station (9am – 3pm, Monday to Friday) or use the Crimestoppers number anonymously 0800 555111. We can only act on what we know, Facebook doesn't count.

Yesterday I attended some WOARM training in Levin. This is an initiative being brought to the wider Horowhenua and Ōtaki having been trialled for 3 years in Palmerston North. It stands for Whanau Ora Alternative Resolution Model and encompasses the multi-agency approach we have been striving for since our drive toward Prevention First Policing.

Next up will be Whanau Tu that will be available to assist those struggling in relationships. Again it will have the all-encompassing focus of WOARM.

From a Road Policing point of view, as Spring arrives, the sun will be low and bright in the morning and evening. I have seen lots of vehicles being driven straight off the driveway with no clear vision through the fogged up window as sunstrikes the windscreen in the morning.

Keep ‘em peeled and stay safe.

Cheers  
Dan

## Native seed bank to conserve NZ's plant biodiversity

BELINDA MCLEAN

Cleaning seeds for New Zealand's native flora seed bank is a serious and painstaking business, a group of Ōtaki locals found recently.

After being introduced to native seed-cleaning at a July session at the Otari Native Botanic Gardens in Wellington, members of the Ōtaki group suggested to organizer, Palmerston North-based Anthea McClelland that a follow-up session be arranged locally. Anthea works voluntarily for the New Zealand Indigenous Flora Seed Bank and is also chair of the Manawatu Branch of Forest and Bird.

So in late August eight Ōtaki people—including members of Forest and Bird, Transition Town Ōtaki and Waitohu Stream and Dune Care—sat down under the guidance of Anthea and a young French Massey intern, Heloise Colmet-Cartraud. Armed with tweezers, sieves, brushes and bare hands, the task was to clean a range of seeds, collected from parts of the North Island to as far south as Southland.

The New Zealand Indigenous Flora Seed Bank (NZIFSB), is an initiative led by Massey University in collaboration with the Department of Conservation, Landcare Research, AgResearch and the New Zealand Plant Conservation Network. The project has received funding from the Massey University Strategic Innovation Fund, the New Zealand Lottery Grants Board and the George Mason Charitable Trust. The aim is to collect native seeds in order to conserve New Zealand's biodiversity. The project is part of the Millennium Seed Bank Partnership, led by the UK Royal Botanic Gardens, Kew.

Anthea began the morning by explaining the seed-cleaning process and how this fits in with the overall picture of preparing seeds for the seed bank. The cleaning is just one part of a multi-step process and best practice must be applied at each stage, from collection to the final depositing of the seeds in the seed bank.

She then gave each volunteer

a collection to clean and advised on the process to use for that particular seed. They ranged from very demanding, tiny seeds with a lot of debris, to larger, relatively clean seeds such as those from flax.

Depending on the luck of the draw, some in the group spent almost the entire four hour session on one type of seed, while others were able to process several.

Once through all the processing stages, the quality of the seed is assessed at Massey University and the seeds are then banked at low moisture and at a temperature of minus 20° C. The seed is banked in the Margot Ford Germplasm Centre at AgResearch in Palmerston North, while a specimen of the plant from which the seed is collected is held at the Dame Ella Campbell herbarium at Massey University.

Once it is banked, seed can remain viable for decades, depending on the type. Withdrawals are possible but only in very special circumstances, for example to reintroduce species where populations have been lost.

Anyone with a passion for conservation who would like to get involved in this interesting project should contact Jessica Schnell, NZIFSB Coordinator, email: [J.L.Schnell@massey.ac.nz](mailto:J.L.Schnell@massey.ac.nz)



*There in times of need*

- **FREE Bereavement Support Services**
- **Moral support & a friendly listening ear**
- **24 hour service**
- **Male and Female Funeral Directors**
- **Qualified Staff**
- **Large Chapel and Refreshment Lounge**
- **Funerals Directed Any Area**

**Kapiti Coast Funeral Home**  
9-11 Hinemoa Street, Paraparaumu • P: 298 5168  
[www.kapiticoastfuneralhome.co.nz](http://www.kapiticoastfuneralhome.co.nz)

# Ōtaki's History

From the *Otaki Mail*, Wednesday August 11 1926

## ŌTAKI FIRE BRIGADE THE NEW ENGINE

The new fire engine, made to the order of the Ōtaki Fire Board, arrived in Ōtaki from Feilding last week, Mess Irvine and Nelsson bringing it through. The engine (a Ford), attractive in appearance, should serve its purpose admirably. The whole of the material is of the best, and all labour has been done in a thorough workmanlike style. The sills, crossbars, and other material used in the framing is all first-class well-seasoned spotted gum.... A deal of the wood-work is of the best quality kauri.... The whole of the engine is finished in regulation light fast red, picked out in black and fine lined in white. Lettering "Ōtaki Fire Brigade" is in gold and shaded in light blue. The whole is very comfortable and once tuned up will be an engine that any country fire brigade will be pleased to have.

## ŌTAKI HISTORICAL SOCIETY

The last meeting was the Annual General Meeting.

The new President is Meagan Roach, immediate Past President Anne Thorpe, Secretary Sarah McLean, and Treasurer Jeanette Carpenter. The speaker for the evening was well-known radio announcer Nigel Hopkins, who spoke about Tatum Park, an institution which brought back memories to many of the audience. The history of it was unknown to many and the stories of Major and Mrs Tatum who built the house, and the later days of the park as a scout camp, were of great interest.

## ŌTAKI MUSEUM

The exhibition *Not Only Te Rauparaha and Hadfield But Also...* is continuing to attract good visitor numbers. The stories and photographs of 37 people from Rex Kerr's book of the same name interest both descendants and those interested in Ōtaki's early history. The book is on sale for \$30 at the museum, which is open Thursdays, Fridays and Saturdays 10 am – 2 pm.



Ōtaki's Main Street was still Mill Road when this postcard was issued, c1920. The fairly new (1918) Bank of New Zealand, now the museum, is on the left. Traffic does not seem very heavy!

**ŌTAKI**  
HISTORICAL SOCIETY  
*keeping our history alive*

The Ōtaki Historical Society collects, records and preserves historical items of interest about the Ōtaki area. We also contribute to exhibitions and events that celebrate and commemorate our history. New members are always welcome.

Regular public meetings are held every two months, with the next one on Tuesday 4 October, at 7.30 pm in the Rotary Lounge. The Ōtaki Historical Society Journal is published each year in December.

[www.otakihistoricalsociety.org.nz](http://www.otakihistoricalsociety.org.nz)

**Preserving our heritage since 1977**

## Patrol Receives Donation from Trust

The Ōtaki Community Patrol has received a much needed donation of \$600 from the NZ Police Managers' Guild.

The patrol which provides support for local Police has 17 members who regularly patrol the area.

The Guild supports crime prevention efforts nationwide and receives funds from advertising in a national crime prevention publication.

Ōtaki was one of six Patrols in the Manawatu Area which received financial support from the New Zealand Police Managers Guild Trust fund. This money will be applied to running costs for the Ōtaki patrol vehicle.

Secretary of the Police Managers' Guild Trust, Earle Cooper said, "The Trustees are pleased to be

able to provide some assistance toward the Community Patrol costs and thank those involved in the teams for making time available to Police."

Patrols that were recognised were Ōtaki, Palmerston North, Himatangi Beach, Feilding, Levin, and Dannevirke.



The \$600 cheque from the Police Managers' Guild was presented to Errol Maffey, Co ordinator / Trainer for the Ōtaki Community Patrol by Constable Les Wan, Police Liaison Officer for the Ōtaki Community Patrol on behalf of Sergeant Slade Sturmeŷ Ōtaki Police.

## Electricity bills and vulnerable consumers

### Struggling to pay your power bills – does this make you a vulnerable consumer?

According to the Electricity Authority, a vulnerable consumer is:

- a domestic consumer of electricity whose health or wellbeing would be seriously threatened if their electricity supply was cut; and/or
- a domestic consumer who is finding it genuinely difficult to pay their electricity bills because of severe financial insecurity, whether temporary or permanent.

For example, you might qualify as a vulnerable consumer if you:

- are on a low income or are elderly or
- have health problems or
- have very young children or
- are living with someone who is elderly or has health problems.

If you or someone living with you depends on your mains power to run critical medical support equipment, then you may qualify as a medically dependent consumer.

If you think you're a vulnerable consumer you need to let your electricity provider know as soon as possible. They may ask for proof e.g. from your general practitioner, budgeting agency, or Work and Income (if you are a beneficiary), and will probably contact you once per year to check whether your status is still the same.

### What difference will it make if I tell my power company I'm a vulnerable consumer?

If you have told your power company that you are a vulnerable customer and have difficulty with paying your power bill, the company should follow certain procedures

to help you – and only disconnect your power supply as a last resort.

Your power company should contact you to discuss your options which may include:

- discussing alternative pricing and payment plans
- advising you of agencies which can help you with budgeting
- referring you to Work and Income (with your consent) to determine whether you are eligible for financial assistance:

Depending on your circumstances you may be eligible for assistance from Work and Income:

- Advance on your benefit
- Special Needs Grant
- Temporary Additional Support
- Recoverable Assistance Payment
- Disability Allowance
- Accommodation Supplement

Usually, if you have not paid your power bill after 48 days your provider can disconnect your power supply. However before disconnection takes place they should make a reasonable effort to contact you about the issue. If they have identified you as a vulnerable consumer, they should follow the procedure outlined above.

Power companies have to give at least 7 to 14 days' notice before disconnection and then contact you again at least 24 hours before the actual disconnection. The notice includes their contact details (so you can ask them for credit help), as well as information about their dispute resolution process and the cost of disconnection and reconnection.

There is normally a hefty fee for being disconnected and reconnected, so it's best to try and avoid this if at all possible.



Our advice is free and confidential. We have the information to help you with your problems, or can point you in the right direction..  
**Call / email or see us -**

Monday to Friday 9.00 am - 3.00 pm  
65a Main Street, Ōtaki Village  
(next to the swing park by the Memorial Hall)  
Tel 06 364 8664 or 0800 367 222  
Email [otaki@cab.org.nz](mailto:otaki@cab.org.nz) [www.cab.org.nz](http://www.cab.org.nz)

- Legal & Employment Issues
- Benefit Entitlements
- Housing & tenancy issues
- Neighborhood & other issues
- Health, Human Rights
- Personal Problems
- Transport issues
- Consumer Rights

Free 20-minute legal appointment & JP available by arrangement  
Age Concern representative at Bureau every 3<sup>rd</sup> Friday 9am-12pm  
Housing NZ every 2<sup>nd</sup> Friday 10am-3pm  
Foodbank donations – drop In  
Rooms available for hire at reasonable rates

If you are worried about being disconnected contact your local CAB to see if we can help.

Source: [www.nzcab.org.nz](http://www.nzcab.org.nz)

## A House to Let Wows

BY MARGARET ANDREWS

What an amazing evening attending the premiere of *A House to Let*, played to a packed Otaki College Hall audience.

Small town Otaki, could have been the setting for the fictional town of Porohiwi and its residents, portrayed by a cast of 36 aged from about five years to 80 plus, as they told their stories.

*A House to Let*, covered 80 odd years with the New Zealand Labour Party prime ministers, through the lives of the people of small town Porohiwi and their daily newspaper, the Porohiwi Star. With only a table and chair and park bench for the set, the stage was filled with the three musicians and the actors - the townspeople with several playing cameo roles. The two newspaper sellers, Maizy Kingsford Brown and Pare Finlay, along with the storyteller, Ann Chapman, brought the news of the events around NZ and the world, tied together with songs of each era, weaving the kaleidoscope of our stories and history together.

From late 1934 leading into the '35 General Election and the first Labour Prime Minister, Michael Joseph Savage came to power. Actors brought Savage, Peter Fraser, Walter Nash, Norman Kirk, David Lange and Helen Clark to "life", each telling of some of their moments, as the storyline went on - outbreak of World War II, the death of George VI and Elizabeth's reign began; 1953 the coronation, Hillary's conquest of Everest, the Royal tour and Waitangi Disaster, 1960's - Olympic champions, television

arrives, Wahine Disaster and USA put a man on the moon. Demonstrations held against the Vietnam War, '81 Springbok tour, gay rights and anti-nuclear stance; then the stock market crash.

Those playing these roles portrayed each PM to a "T", aided by the writer's inclusion, from records, of actual speeches given by the individuals.

The play written by local playwright Renée to mark and celebrate 100 years since the NZ Labour Party was formed, portraying the years through the "eyes" of its prime ministers.

"I loved the way the community got together and did it," she said after the show.

"It was fantastic!" she said. "Most of those people hadn't been on stage. I'm very pleased with the result."

Very few cast members had ever been on stage, so congratulations on a very memorable evening.



Playwright, Renée and Andrew Little, Labour Party Leader, following the premiere performance of *A House to Let*



Writer, directors and cast of *A House To Let* (minus musicians) along with the College lighting & sound boys pic Ann-Marie Stapp

## Bees through the seasons

### Supporting Global Bees

PENNY KERR-HISLOP

Bears like honey. In the dense spruce forests of northern Slovakia since time immemorial, Slovak bears have harvested wild honey from the native bees (*Apis m. carnica*). In the 12th century bees started to be managed and a strong tradition of beekeeping began. The early hives were made of wood and in the shape of colourfully painted saints or bears.

Peter Perrot is a beginner beekeeper in the small settlement of Sulov in the Fatra-Tatra mountain area of the Inner Western Carpathians. He has at present around six hives and his ambition is to get his hive numbers up to 100. He plans to run an "Apitouristik" business that would introduce visitors to beekeeping and through which he could sell a range of bee-based products. He was kind enough to talk to me, with my friend Priska interpreting, and tell me about the state of beekeeping in Slovakia.

We sat in his outdoor open-plan shed around a hand-hewn wooden table looking out over the flowering meadows and spruce forests that seem typical for that part of Slovakia. The high jagged ancient rocks of Sulov-Hradna towered in the background. It is a very beautiful place and to know that the dense forest still supports such rare species as lynx and bears made it even more special.

But Peter is facing the same problems that seem to now affect beekeepers worldwide. *Varroa* entered the region in the 1970s and like in New Zealand, must be treated with chemicals for the colonies to survive. With the demise of the wild bees as a result of *Varroa*, I hoped the bears were getting enough of a sugar hit from the wild blueberries and cranberries! Surrounded by uncultivated meadowlands, means there is minimal agricultural usage and for that Peter is grateful. Other threats to beekeeping in Slovakia include American and European Foulbrood and the usual suspects of invasive species such as the Asian Hornet are knocking on Slovakia's door.

Peter's hives were made of solid natural wood and each had a little window through which you could see the dark bees working away. The bees were quiet and content in the warm summer sun. Who wouldn't be surrounded by such beautiful wildflower meadows, stretching for miles simply humming with insect life. Peter's daughter had painted the hives with happy faces, sunshine and flowers.

I wonder if she realised she was upholding a Slovak tradition that was centuries old.



## Tooth Truths

By the age of just three years, up to 70% of cats and 80% of dogs have signs of dental disease. An unhealthy mouth can cause bad breath, chronic pain, reduced quality of life, and can even lead to heart, kidney or liver disease.

Unfortunately pets can't tell us that their teeth or mouth hurt. Dental disease is not always easy to detect, as lesions can develop under the gum line, and animals can change their eating behaviour and food preferences to avoid pain. Sometimes changes in behaviour, such as pet becoming grumpy may be the only sign something is wrong. As a result many cases of oral disease escape detection and pets suffer in silence.

Obvious signs that your pet may have a

problem and require a vet visit include bad breath, facial swellings, dribbling or drooling, having difficulty eating or going off their food, weight loss, pawing or rubbing their mouth, or lack of grooming. However, the presence of dental tartar and reddening of the gums with no other signs is enough to suggest that your pet may need a dental.

Dental care such as brushing, dental diets, and chews are useful before problems develop, and after their teeth have been cleaned. None of these measures will help an animal with advanced dental disease. Prevention and early detection of dental

disease is more cost effective and safer for your pet, rather than lengthy anaesthetics and tooth extractions as dental disease progresses.

Dental care is an important part of maintaining your pet's overall good health and we are committed to helping you achieve the healthiest life possible for your furry friend. Regular dental checks can help make sure your pets mouth stays

in excellent health. Your pet may need to be scheduled for a dental procedure, or maintained at-home with specialised dental diets, dental chews or toys, teeth brushing or additives for their drinking water. Give us a call to arrange an appointment to check your pet's teeth.



**Otaki Animal Health**  
VETERINARY CLINIC

31 Dunstan Street, Otaki  
Telephone 06 364 7089

*Come and meet our friendly team*

# Handy folk to know

Appliance Repairs	
Appliance Rescue	364 3098
Automotive	
All Things Automotive	364 8158
Central Auto Services	368 2037
Colling & Gray	364 7495
SRS Automotive Engineering	364 3322
Auto Tyres	
All Things Automotive	364 8158
Builder	
Chris Cairns	364 0004
Computer Servicing	
Computer Problems	021 160 5929
Carpet Cleaning	
Bloxham Superclean	364 6777
Chimney Cleaning	
Bloxham Superclean	364 6777
Concrete Work	
Craig Howell	364 6064
Bevan Concrete	0800 427522
Contractors	
Rasmac Contractors	0274 443 041
Electrical	
DSR Electrical	027 511 4746
Hartley Electrical Ltd	364 2070
Firewood	
Wood Splitter	027 447 3371
Funeral Directors	
Harvey Bowler	06 368 2954
I.C. Mark Ltd	06 368 8108
Kapiti Coast Funeral Home	04 298 5168
Waikanae Funeral Home	04 293 6844
Garden Plants	
Talisman	06 364 5893
Trinity Farm	06 364 6194
Te Horo Garden Centre	06 364 2412
Watsons Garden Centre	06 364 6836

Kapiti Coast District Council	
General Inquiries	06 364 9301
Toll Free	0800 486 486
Otaki Library	364 9317
Otaki Swimming Pool	364 5542
Lawnmowers	
Mr Green	04 293 8742
The Lawn Moa Company	364 6771
Lawyer	
Susie Mills Law	364 7190
Simpson & Co	364 7285
Locksmith	
Otaki Locksmith	021 073 5955
Pest Control	
Protekt Pest Control	364 5759
Plumber	
Henderson Plumbing	364 5252
Ryan Plumbing & Gas fitting	027 243 6451
About Plumbing	364 5586
Roofer	
Ryan Roofing	027 243 6451
JS ROOFING	364 6406
Taxi	
Paraparamu Taxis	364 0500
Kapiti Shuttles	04 902 5476
Tool Sharpening	
Mower & Engineering	364 5411
Truck Maintenance	
Otaki Truck Services Ltd	364 0160
Veterinary Services	
Otaki Veterinary Centre	364 6941
Otaki Animal Health	364 7089
Window & Door Repairs	
Mike Watson	364 8886
Scaffolding	
Secure Scaffolding	364 6406

**Birthingright Op Shop**  
23 Matene Street, Otaki  
Monday – Friday 10am – 4pm  
Saturday 10am – 1pm

**Good/Used clothing for sale**  
Baby clothing \$1      Adult shoes \$3 - \$5  
Children's clothing \$2      Lots of bric-a-brac from \$1  
Adult clothing \$3      Assortment of antiques for sale

We are always looking for volunteers to help in our shop – please see the Shop Manager for an application form.

**BEVAN CONCRETE PLACING LTD**  
Concrete Contractors

- Concrete Placing • Floors • Paths
- Driveways • Exposed Aggregates

Ph. 0274 488 592 or 0800 427 522  
bevanconcrete@xtra.co.nz

**QUALITY ASSURED**

**WESTCOAST AUTOMOTIVE SERVICES**

MAIN ROAD SOUTH, LEVIN  
K.S. McFadyen & L.J. Buckley Ltd  
FULL DIESEL REPAIRS & MAINTENANCE  
All C.O.F. Work  
Transport & General Engineering  
Tel: 04/588 2837 or 04/588 1691 (24hrs)

**WORK WANTED**  
Gardening  
Home Help  
Spring Cleaning

Give me a call to discuss. References available  
Phone Val 364 7276 or 0272 271 558  
email twin\_waters@xtra.co.nz

Phone: 0274 443 041  
or 0274 401 738

**Rasmac Contractors**

- Earthmoving / Aggregate
- Drainage Site Works / Section Clearing
- Drive Ways Excavation / Tarseal / Hot Mix
- Top Soil / Farm Roads

**CONCRETE CONTRACTOR**

For all Kerbing, Paving, Floors, Drives  
Paths and Concrete Work  
**FREE QUOTES**  
Phone Craig Howell  
027 448 0447 \* After hours: 06 364 6064

**Window & Door Repairs**  
I fix all Doors, Windows & Conservatories

**SAVE \$\$\$\$**

Call Mike Watson  
Free 0800 620 720  
or Otaki 364 8886

Locks \* Rollers  
Handles \* Stays  
Glass \* Leaks  
Draughts \* Seals

Find me at: [www.windowseal.co.nz](http://www.windowseal.co.nz)  
Or like at: [facebook.com/windowseal](https://www.facebook.com/windowseal)

**WAIKANA FUNERALS**  
celebrating the life

04 293 6844 | 17-21 Porirua St  
info@waikanaefuneralhome.co.nz

HAVE YOU THOUGHT OF FUNERALS OR EVEN PRE-PAYING? THINK OF IT AS AN INVESTMENT - CALL US TO

**INPRO GROUP**  
INSURANCE

**Business Cover**  
**House & Contents**  
**Motor Vehicle**  
**Race Car**  
**Farm Package**  
**Health**  
**Life & Trauma**  
**Income Protection**

**REX DUCKETT**  
06 364 6123  
0800 367 467

Disclosure Statement available upon request

**OTAKI MAIL**

**Cobwebs  
Op-Shop**

Main Street  
Tuesday-Friday 10-4pm  
Saturday 10-1pm

We need your support  
Please share some of your give-aways with us  
Every dollar raised in the shop goes back into the Otaki community



**Buying or selling Real Estate?**

www.open2view.com may be the answer.  
Professional Photography  
Website  
Interactive Floorplans  
Video  
Elevated and Aerial Photography  
Signboards

We do it all. Phone Phil on 021 243 8344

Writer specials on PhotoSignboards - conditions apply.  
Working in partnership with your favourite Real Estate Agent



The real estate website

**Henderson Plumbing & Bathrooms**

Covering  
**Kapiti Coast - Levin**

- plumbing
- roofs & spouting
- new homes
- drainage
- maintenance
- free advice and quotes

**All Plumbing Services**

Tel: 06 364 5252  
Fax: 06 364 5254  
Cell: 027 448 5828  
PO Box 217, Otaki  
Email: [hendersonplumbing.co.nz](mailto:hendersonplumbing.co.nz)

Don't have gas fitting sorted for all your gas needs?



Justin Will  
Ph: 027 467 2063  
A/Hrs: 06 364 5586  
Email: [aboutgas@gmail.com](mailto:aboutgas@gmail.com)

**Otaki Churches welcome you**

<b>Acts Churches</b> The HUB Tel: 364 6911 157 Tasman Rd, Otaki 10.15 am (Family service) 5.30 pm (Youth service last Sunday of the month) 10.15 am Big Wednesday	<b>Anglican</b> <b>Otaki:</b> All Saints. Te Rauparaha St 8 am and 10.30 am <b>Te Horo:</b> St Margarets, School Rd 9 am <b>Manakau:</b> St Andrews 9 am (Except 1st Sun of Month)	<b>Rev Ian Campbell</b> Tel: 364 7099
<b>Baptist</b> Tel: 364 8540 Cnr Te Manuao Road/SH1 10.00 am service	<b>Otaki:</b> Rangiatea Church Services 37 Te Rauparaha St Sunday Eucharist: 9 am Church Viewing Hours: (school term) Mon, Wed, Fri (10.00am - 1pm) or tel office: 364 6838 Email: <a href="mailto:rangiatea.church@xtra.co.nz">rangiatea.church@xtra.co.nz</a>	
<b>Presbyterian</b> Rev. Peter L. Jackson Tel: 364 6346 249 Mill Rd, Otaki Worship: 11 am Cafe Church: 2nd Sun 10.45 am	<b>Shannon:</b> Turongo Church - Pou tu Marae Shannon/Foxton Highway 3rd Sunday 11.30am <b>Levin:</b> Ngatokowaru Marae Hokio Beach Road 4th Sunday 11am	
<b>Community Church</b> Tel: 364 0012 17 Waerenga Road Sunday School: 9-10am Family Service: 10.30 am	<b>Catholic</b> <b>Otaki:</b> St Mary's "Pukekarakara" 4 Convent Road Weekend Mass Sunday Mass 11am, 5pm	
<b>River Life Family Church</b> Sunday Service: 10.30 am Waitohu School hall	<b>Kuku:</b> St. Stephens Sunday 8am (First Sunday of the month)	

**OTAKI SHUTTLE SERVICE**

06 364 6001

Seven Day a week service  
up until midnight (or later)

- Set Tarriff charges of -  
\$10 + \$5 per passenger between  
Te Horo & Manakau
- Further afield trips negotiable
  - special rates for drop-off & Pickup
  - don't risk your licence



EFTPOS  
available in vehicle

**RYAN**  
Plumbing • Gasfitting

- Residential • Wetbacks
- Commercial • Woodburners
- Solar Hot Water Systems

**RYAN**  
Roofing

- New and re-roofing
- Longrun coloursteel
- P.V.C & Coloursteel Spouting
- Repairs and Maintenance
- Flashing Fabrication
- Sheetmetal Work

0272 436 451    06 362 6595  
Manakau

**OTAKI LOCKSMITH**

RANCHSLIDER & WINDOW

REPAIRS

KEYS cut

LOCKS - repaired

or new locks fitted

RANCHSLIDER - Wheels & locks -

TRACKS REPAIRED

WINDOW - catches & hinges -

security stays

Resident in Otaki with 25 yrs experience

Phone Alastair Riddle NOW

021 073 5955



**Automotive & Engineering**

NEHRA approved engineer  
Qualified Diesel Mechanic  
38 years experience

Barry Sutton

364 3322

34 Sutton Rd, Te Horo

- WOFs and LUBES
- Light Engineering & Welding
- Classic Car Repairs

www.srsauto.co.nz    027 556 9255

**Attacked by Fence Post?**



- Spray Booth
- Chassis Machine
- Chassis Straightening
- Rust Repair
- Crash Repair
- Plastic Welding
- 24 hour Towing & Salvage
- All Insurance Work
- Farm Equipment Repaired
- Competitive Prices



Talk to us about your automotive, marine, cabinet colour and furniture paint work.

**COLLING & GRAY**

OTAKI - PANELBEATERS & SPRAY PAINTING

3 Arthur St, Otaki Phone 06 364 7495

**HARVEY BOWLER**  
**FUNERAL SERVICES LTD**  
 Est. 1923

Creating opportunities for a personal farewell.

Don't leave the stress and worry to your family members. Request a free funeral kit and plan your farewell today.

Complimentary "My Life, My Funeral" talk. Simply call and we will happily send one out to you.

**LEVIN OTAKI SHANNON**  
 Phone: 06 368 2954  
[www.harveybowler.co.nz](http://www.harveybowler.co.nz)

## A Centennial Celebration

BY MARGARET ANDREWS

Irene Walker achieved 100 years on August 1 and as one of the foundation members of the Ōtaki Pottery Club, club members treated her to a celebratory morning tea the following week.

"Working with the clay was mostly hard work, but I liked the hands on approach," she said. "When I was sitting at the bench working, I could talk to people. Time goes quickly then"

Over the years most of her interests had centred round her family, her husband, son and daughter and later three grandsons and great grandson and great granddaughter in Brisbane. She only stopped going to pottery about four years ago. Quilting was something she enjoyed and in earlier years she learned to play the piano and did all the exams.

"I still play occasionally, but my fingers don't go where I want them to!" she laughed.

She was living in her own home at Waikawa Beach and driving herself wherever she needed to go, until a fall just before last Christmas, meant she had to go into care. She's been at the Masonic Village since then, but still aims to go back to her own home "Dream on Irene!" she said with a grin.

Besides a big birthday cake and candles - only three to spell out 100, the club members had prepared a clay disc for Irene to put her hand print on, including a ribbon noting her 100th birthday, a lasting memento to her 25 years membership of the Pottery Club.



Rod Graham, helps Irene Walker put her handprint into the clay to commemorate her 100th

During the weekend prior to the Pottery Club celebration, there was a celebration at Tatum Park with family and friends, including her 94 year old brother.

## Interested in playing cricket this summer?

Our cricket team are year 4 and 5 students from Waitohu and Te Horo school. We played in the Wellington competition last year for Kapiti junior cricket. We won 13 out of 15 games against different teams, only just losing 2.

We train at Hauratai park or Ōtaki college. We are looking to have 2 or 3 teams this year and are looking for more students from around the Ōtaki region to boost our numbers. We are looking for yr 4 to 7 students who are keen to learn and play the game of cricket. We also looking for coaches and managers.

For more information contact Jamie Prentice ph:027 738 7111 or email [jamileeprentice@gmail.com](mailto:jamileeprentice@gmail.com).



Jamie Prentice(coach), Ollie Parkinson, Kadyn Orchard, Nathan Sparrow, Preston Orchard, Loius Bevan, Forest Hall, Justin Pound  
 front row: Declan Prentice, Lucas Mildenhall, Theo Nikora and Riley Moy



"As Kapiti's representative on Greater Wellington Regional Council I will be loyal to Kapiti, grounded in the needs of Kapiti and determined in my continued advocacy for Kapiti."

*Penny*

My current roles include:

- Councillor, Kapiti Coast District Council (2 terms)
- Chair, KCDC's Environment & Community Development Committee (2 terms)
- Co-Chair, Wellington Region's Waste Management & Minimisation Joint Committee of all 9 Councils.

My focus: Safeguarding environmental sustainability, leveraging greater economic opportunities for the Kapiti Coast, and restoring positive relationships between Regional Council and our community, so that we protect our district for future generations.

[penny.gaylor@hotmail.com](mailto:penny.gaylor@hotmail.com)  
 027 664 8869 or (06) 3647534  
[Facebook.com/penny.gaylor](https://www.facebook.com/penny.gaylor)  
[www.pennygaylor.co.nz](http://www.pennygaylor.co.nz)

Authorised by Penny Gaylor, 22A Bell St, Otaki

**Penny Gaylor**

Greater Wellington Regional Council  
 Candidate 2016

